



F. No. 19-01/GA/2019-20/FSSAI
FOOD SAFETY AND STANDARDS AUTHORITY OF INDIA
MINISTRY OF HEALTH AND FAMILY WELFARE
3RD FLOOR, FDA BHAWAN, KOTLA ROAD,
NEW DELHI-110002

Dated, the 27th August, 2019

TENDER NOTICE

**INVITING BIDS FOR CREATION OF RENOVATION AND FURNISHED OFFICE
ACCOMMODATION AND MISC WORK FOR WR FSSAI AT PTH, ANDHERI (E),
MIDC AREA, MUMBAI**

Food Safety and Standards Authority of India invites sealed Tenders from the experienced and well established bidders for carrying out the renovation, repairs and creation of furnished ready to move office accommodation at ground floor area of Pilot Test House premises located in MIDC area, Andheri (E), Mumbai in compliance of terms and conditions stipulated in the tender document.

2. The tender document is available on the FSSAI website as well as on CPP Portal. The duly filled in Tender Document with relevant supporting documents may be submitted on or before **20th Sept, 2019 by 1300 hrs** addressed to Asstt Dir (GA), FSSAI, 3rd Floor, FDA Bhawan, Kotla Road, New Delhi 110002 along with Demand Draft/Pay Order for Rs.18,00,000/- (Rupees Eighteen Lakhs only) (Non-bearing interest) as Earnest Money Deposit (EMD). The tender fee is Rs.500/- payable in cash/by demand draft/banker's cheque. The Demand Draft/Pay order towards EMD and/or tender fee should be in favour of Senior Accounts Officer, FSSAI payable at New Delhi.

3. Tender document (non-transferable) containing detailed specifications, terms & conditions can also be obtained from FSSAI HQ, GA Division, 3rd Floor, FDA Bhawan, Kotla Road, New Delhi-110 002 on payment of cost of tender Rs.500/- (non-refundable) in the form of Demand Draft/Pay Order drawn on any Nationalized/Scheduled commercial Bank in favour of *Senior Accounts Officer, FSSAI*, New Delhi or in cash. Alternatively, the tender document can be downloaded from FSSAI's **website: www.fssai.gov.in** or through **CPP Portal www.eprocure.gov.in/epublish/app** with the payment towards cost of the tender document and submission of bid as mentioned above.

Address for communication: Asstt Dir (GA), Food Safety and Standards Authority of India (FSSAI), 3rd Floor, FDA Bhawan, Kotla Road, New Delhi. -110002

**ASSTT DIRECTOR (GENERAL ADMINISTRATION)
FOOD SAFETY AND STANDARDS AUTHORITY OF INDIA**



F. No. 19-01/GA/2019-20/FSSAI
FOOD SAFETY AND STANDARDS AUTHORITY OF INDIA
MINISTRY OF HEALTH AND FAMILY WELFARE
3RD FLOOR, FDA BHAWAN, KOTLA ROAD,
NEW DELHI-110002.

Dated, the 27th August, 2019

**INVITING BIDS FOR CREATION OF RENOVATION AND FURNISHED OFFICE
ACCOMMODATION AND MISC WORK FOR WR FSSAI AT PTH, ANDHERI (E),
MIDC AREA, MUMBAI**

1. This Request for Proposal (RFP) is divided into five Parts as follows:
 - (a) **Part I** – Contains General Information and Instructions for the Bidders about the RFP such as the time, place of submission and opening of tenders, Validity period of tenders, etc.
 - (b) **Part II** – Contains essential details of the works/services required, such as the Technical Specifications, Work Completion Period, Mode of Carrying out the required works/services/supply of items/material and Consignee details.
 - (c) **Part III** – Contains Standard Conditions of RFP.
 - (d) **Part IV** – Contains Special Conditions applicable to this RFP and which will also form part of the contract with the successful Bidder.
 - (e) **Part V** – Contains Evaluation Criteria and Format for Price Bids.
2. This RFP is being issued with no financial commitment and the FSSAI reserves the right to change or vary any part thereof at any stage. FSSAI also reserves the right to withdraw the RFP or withhold/cancel the proposed work even after selection of suitable vendor, should it become necessary or considered appropriate at any stage without assigning any reason there-for.

PART I – GENERAL INFORMATION

1. **Last Date and Time for Depositing the Bids.** 20th Sept, 2019 by 1300 hrs.

The sealed Bids, both Technical and Financial should be deposited/reach by the due date and time. The responsibility to ensure this lies with the Bidder.

2. **Manner of Depositing the Bids.** Sealed Bids should be either dropped in the Tender Box earmarked for the purpose at 3rd Floor, FSSAI, FDA Bhavan, Kotla Road, New Delhi-

110 002 or sent by post at the address given above so as to reach by the due date and time. Late tenders will not be considered. No responsibility will be taken for postal delay or non-delivery/ non-receipt of Bid documents.

3. **Time and Date for Opening of Bids.** Sealed Bids received by the due date / time will be opened at **1400 hrs on 20th Sept, 2019**. If due to any exigency, the due date for opening of the Bids is declared a closed holiday, the Bids will be opened on the next working day at the same time or on any other day/ time, as intimated by the FSSAI.

4. **Location of the Tender Box:** 3rd Floor, FSSAI, FDA Bhavan, Kotla Road, New Delhi-110 002.

5. **Place for Opening of Bids.** Bids will be opened in the Conference Room, 3rd Floor, FDA Bhavan, FSSAI HQ, Kotla Road, New Delhi -110 002. The Bidders may depute their representatives, duly authorized in writing, to attend the opening of Bids on the due date and time. *Important commercial/technical clauses quoted by Bidders will be read out in the presence of the representatives of all the Bidders.* This event will not be postponed due to non-presence of bidder's representative due to any reason. Please note that only the Technical Bid would be opened on the time and date mentioned above. The schedule for opening of Financial Bid will be intimated after acceptance of the Technical Bid. Commercial/Price Bid of only those firms will be opened, whose Technical Bids are found compliant/suitable after Technical Evaluation is done.

6. **Submission of Bids.** Bids should be forwarded by Bidders under their original memo/letter pad, inter-alia, furnishing details like GST Regn. Number, PAN Number, ESI/PF Regn numbers, Bank address with NEFT Account details, etc and complete postal & e-mail address of their office. The following aspects are to be kept in mind by firms/companies while submitting their bids:-

(a) Bids against this RFP are required to be submitted, as stated above, under a two-bid system as per the technical requirements indicated in **Part –II of this RFP**. The technical bids are to be accompanied with requisite EMD and other related supporting documents. If tender fee is not paid, an amount of Rs.500/- as Tender Fee in the form of a Bank Draft/Pay Order/Banker's Cheque drawn in favour Sr. Accounts Officer, FSSAI payable at Delhi/New Delhi will have to be deposited.

(b) Bids are to be submitted in separate sealed covers/envelopes containing sealed technical and financial bids. Bids are to be duly marked with the title as '**Technical Bid for Sprucing Up and Other Misc Works in FDA Bhawan**' or '**Financial Bid for Sprucing Up and Other Misc Works in FDA Bhawan**'. The Master Cover in which the Technical and Financial bids are to be enclosed needs to be labelled with the Title of RFP i.e '**Bid for Sprucing Up and Other Misc Works/Services in FDA Bhawan**'.

(c) Financial bids of only the technically qualified bidders would be opened/considered and no representation or contention in this regard shall be entertained.

7. **Clarification of RFP.** Bidders may seek clarifications in writing regarding this RFP document within one week of issue of RFP. FSSAI shall respond in writing to any such request for clarifications and all such clarifications shall be posted on the official website of

FSSAI i.e. www.fssai.gov.in. It is recommended that all bidders physically inspect the venue for the proposed work and services to get an accurate estimation of the requirements, prior to submission of their Bids.

8. **Pre-Bid Conference.** A pre bid meeting will be held on **05.09.2019 at 11 AM** in the office of Food Safety and Standards Authority of India at 3rd Floor, FDA Bhawan, Kotla Road, New Delhi -110 002, to clarify issues and to answer queries on any matter pertaining to the bid that may be raised. The bidders willing to attend the pre-bid conference are requested to inform the FSSAI beforehand in writing or through email. They may also bring their queries in writing which could also be sent through email not later than two days before the scheduled date of pre-bid meeting. The bidders are requested to examine the Qualifying and Technical requirements of the Bid Documents so as to avoid any confusion/scope of not adhering to fulfilling the required conditions and submission of supportive documents along with the bid. In case bidders choose to offer or suggest with better features/specifications/design etc; and concept/material to be used the same shall be discussed by the bidders in the pre-bid meeting and bidders shall also clearly spell out the advantages and superiority of taking such deviations, if they considered it more appropriate and necessary for betterment of the proposed work. The documentary evidence for offering such suggestions with justification shall have to be submitted to FSSAI during the pre-bid meeting. Based on FSSAI confirmation on these points, bidder will submit its offer and will not be allowed to take any further technical deviation at the time of submission of technical offer. Minutes of pre-bid conference/meeting, including the text of the queries raised and the responses/suggestions given, together with any responses prepared after the meeting, will be transmitted without delay to all purchasers of the bidding documents and/or published on fssai official website. Any changes which may become necessary as a result of pre-bid meeting may be made by the FSSAI exclusively through the issue of an addendum and not through the minutes of the pre bid meeting. **It may be noted that non attendance at the pre bid meeting will not be a cause for disqualification of a bidder and is purely voluntary.** The maximum number of participants from an applicant, who chooses to attend the Pre-Bid Conference, shall not be more than two persons. The representatives attending the Pre-Bid Conference shall be in possession of an authority letter, duly signed by the authorised signatory of his/her Organisation.

9. During evaluation and comparison of bids, the FSSAI may, at its discretion, ask the bidder for a clarification on his bid. No post-bid clarification on the initiative of the bidder will be entertained.

10. **Validity of Bids.** The Bids should remain valid for a period of **120 days** from the last date of submission of the Bids.

11. **Earnest Money Deposit.** Bidders are required to submit Earnest Money Deposit (EMD) for amount of **Rs.18,00,000/-** (Rupees Eighteen Lakhs Only) along with their bids. The EMD may be submitted in the form of an Account Payee Demand Draft, Fixed Deposit Receipt, Banker's Cheque from any of the public sector banks or a private sector bank authorized to conduct government business. The EMD should be valid for a minimum period of forty five days or more from the date of last date of bid submission. EMD of the unsuccessful bidders will be returned to them at the earliest after expiry of the final bid validity and latest on or before the 30th day after the award of the contract. The EMD of the successful bidder would be returned, without any interest whatsoever, after the receipt of Performance Guarantee from them as provided in part-IV of this RFP. The EMD will be

forfeited if the bidder withdraws or amends/impairs or derogates from the tender in any respect within the validity period of their tender.

12. **Rejection of Bids.** Canvassing by the Bidder in any form, unsolicited letter and post-tender correction may invoke summary rejection with forfeiture of EMD. Conditional tenders will be rejected. Bids not submitted as per prescribed format will also be rejected.

PART II – ESSENTIAL DETAILS OF ITEMS/SERVICES REQUIRED

Introduction. FSSAI, an autonomous body functioning under Ministry of Health & Family Welfare intends to carry out the repairs/renovation and creation of fully furnished ready to use office accommodation and misc work as per given specifications/design in the Pilot Test House (PTH) premises Ground Floor area of approx 440 sqm located at MIDC Area, Andheri(E), Mumbai – 400 069 and adjoining premises. Detailed scope of work and schedule of tentative quantities for the said works/services are appended below.

1.0 Scope / Description of Work

As stated above, FSSAI intends to create fully furnished office accommodation on GF 440 Sqm area in the annexe PTH building premises located at MIDC area, Andheri (E), Mumbai. The building has Ground Floor with total more than 900 sqm area and half of the same is allocated to FSSAI for its western regional office. As the already old constructed rooms height is more than 19 ft, it has been considered appropriate to build office by creating mezzanine floor viz GF + Mezzanine so as to have more than approx 850 sqm area as per layout/drawing attached for assessment. As the proposed structure is not being utilised over the past many years, it needs to be renovated/repared to make it use worthy. Complete Interior work, Airconditioning, Network Cabling, Telephone and Electricals are required to be carried out. On terrace temporary light weighted construction of approx 350 sqm to make Fitness Centre/GyM facility. Hence, lot of Civil, Electrical work is involved apart from Interiors and provisioning of entire furniture and fixtures. The detailed item-wise description is given below for reference to understand the entire works/services required to be carried out:-

S.No.	Description	Units	Tentative Quantity
A	Civil Work		
1	Demolishing of Brick Work Manually /by mechanical means including stacking of servicable material and disposal of unserviceable material from site as per direction of concerned official. A) Cement mortar	Cum	100
2	Demolishing/Chipping of Existing Stone/Tiles from Floor Manually/by mechanical means including disposal of unserviceable material & usable material to be stake at site as per directions	Sqm	441

3	Removal of Malba by mechanical transport including loading, unloading and stacking at site for all lead and lift complete as per directions of concerned officer.	Cum	145
4	Providing and laying in position Cement Concrete 1:4:8 (1 cement:4 coarse sand:8 graded stone aggregate 20 mm nominal size of coarse sand excluding the cost of centering and shuttering .	Cum	45
5	Brick work with bricks of class designation 75 in super structure in cement mortar 1:6 (1 cement :6 coarse sand of zone II)	Cum	85
6	Half Brick Masonry with bricks of class designation 75 in super structure above plinth level in cement mortar 1:4 (1 cement :4 coarse sand of zone II)	Sqm	195
7	15 mm cement plaster of mix ; 1:5 (1 cement : 5 fine sand of zone IV) including galvanized chicken wire mesh (24 gauge 12mm size) to junctions of concrete masonry work and other locations including cutting to required sizes , side laps of minimum 75 mm and fixing in position with galvanised iron wire nails , complete on ceiling or wherever required .	Sqm	1200
8	Providing & fixing 18mm thick gang-sawcut,mirror polished , prepolished machine cut for kitchen platform vanity counter , window sills , facia and similar locations of required size approved shade , colour & texture layed over 20mm thick base cement mortar 1:4(1: cement :4 coarse sand) joints treated with white cement , mixed matching pigment , epoxy touch ups, including rubbing , curing and complete at all levels .		
	(a) Granite of any colour of shade, area of slab over 0.50 sqm	Sqm	80
9	Providing edge moulding to 18mm thick gang saw cut for kitchen platform vanity counter ,window sills facias and similar locations for require size including rubbing , moulding and polishing to edge to give high gloss finish etc . Complete at all levels.		
	(a)Granite work	Rmt	110
10	Providing & filing of low density material -cinder etc to raise the floor for race way etc .	Cum	15

11	<p>Proving & fixing tiled false ceiling of approved materials of size 595x595mmx15mm in true horizontal level suspended on interlocking Dune Supreme Microlook consisting on main Trunner with sytable space joints to get require length of size 24x38 mm made from .30mm thick minimum sheet spaced at 1200mm center to center and crossed t of size 24x25 mm made of .30 mm thick sheet . 1200 mm long space between main tat 600mm center to center to form a grid of 1200x600mm and secondary cross T of 600 mm and size 24x25mm made of ,30 mm thick sheet to be interlocked at middle of the 1200x600mm pannel to form grid of 600 x 600 mm and wall angle of size 24x24x.3mm and laying false ceiling tiles of approved texture inn the fgrid . including required cutting / making opening of services like deffusers , grids , light fittings , fixtures , smoke detectors etc . Main T suspended using GI sloted cleats of 27x37x25x1.6mm fixed too ceiling with 12.5mm dia and 50mm long dash fastners, 4mm GI adjustable rods with galvanised butterfly level clips of size 85x30x.8mm spaced at 1200 mm center to center along main T , bottom exposed to width of 24mm of all tsections shall be pre painted with polyster paint , all complete for all heights as per specifications , drawings and as directed by engineer . GI metal ceiling lay in plane tegular edge global white colour tiles of size 595x595 mm , and .5mm thick and 8mm drop , made of GI sheet having galvanising of 100m gms /sgm both size inclusive and electro statically polyster powder coated of thickness 60 microns minimum, including factory painted after bending.</p>	Sqm	800
12	<p>Proving 20mm thick plaster of paris (gypsum anhydrous) ceiling up to height of 4m above floor level including coves and moulduing as per sample approved consisting of frame work made of special sections power pressed from MS sheet with galvanised coating consisting of ceiling angle hanger of 20x20x.5mm thick of required length 1and fixed to ceiling dash fastner and other end with hanging arrangment GI channels 45 x25 x.9mm , 5 nos member running to which ceiling section 0.5mm thick bottom rail of 80 mm tapered flenge of 26mm each fixed with self taping screw running in a direction perpendicular to GI channel fixed with self taping screw@ 400c/c and perimeter angle 20x20x.5mm fixed to wall with rawl plugs @ 900 mm c/c providing and fixing SS grade 304 wire gauge with wire of dia ,5mm mesh fixed to wedge shape ceiling section i/c cutting & making smooteh service scaffolding etc all complete as per directions of officer incharge</p>	Sqm	475
13	<p>Structural Steel Work (Supply & installation MS steel) built up sections riveted or welded in trusses & frame work including cutting, fixing & hosting in position and applying priming coat of steel primer.</p>	KG	18000

14	Suppling, drilling, cleaning hole in RCC & fixing HILTI make Mechanical fastner HST3 M12x 125	EACH	600.00
15	Suppling, drilling, cleaning hole in RCC & fixing HILTI make Mechanical fastner HST3 M10 x 100	EACH	600.00
16	Suppling, drilling, cleaning hole in RCC & fixing HILTI make Mechanical fastner HST3 M16 x 160	EACH	400.00
17	Dismantling doors, windows and clerestory windows (steel or wood) shutter including chowkhats, architrave, holdfasts etc. complete and stacking within 50 metres lead	SQM	125.00
16	Providing & fixing Chicken Wire mesh	SQM	728.00
17	Providing & applying 6 mm- 10mm th. average POP Punning/ Gyp Plaster on walls	SQM	1625.00
18	Providing & laying RCC in 1 : 1.5 : 3 (1 Cement : 2 Course Sand : 4 Stone aggregate) with 8mm dia. Bars in counters & lintels at different locations.	Cum	70.00
19	Providing & fixing merine ply shuttering with struts & props in counters & lintels	Sqm	100.00
20	Providing, cutting & binding the steel reinforcement bars	Kg	200.00
21	Providing and fixing precoated iron profile sheet in requisite profile (as directed by site incharge) of 0.95mm thickness (+/- 0.05%). Sheet will be painted with red oxide primer on both sides.	Kg	3500.00
22	Providing and fixing of Water-Proofing in Toilets	Sqm	125
23	Providing & applying of pest control including Anti Termite treatment in the existing Building/ premisses and surrounded open areas and drains.	Sqm	850
B	Door & window		
1	Door & window: Fixed/Shutter UPVC window shall be provided with all fitments. The window/door frame and shutter will be manufacture using suitable UPVC section. The window shutter shall be provided with glazing of duag 20mm (5mm +10mm air gap + 5mm thick) thick toughned glass fixed using rubber gasket.	Sqm	86
2	Proving and fixing 35mm thick BWP flush doors cladde and pasted with 1mm designer laminate(greenlaam / century). On either sides with 38mmx4mm thick real wood margin on all sides fixed with new hinges , push button round lock in SS finish and all other required are there viz door closer etc (hettich/ doorset etc) all company ready to use .	Sqm	32

3	Proving & fixing double skinned fixed partitions wall with doors or opening where ever required fabricated out of 65mmx 50mm champ wood frame as horizontal and vertical sections @ 450mmc/c duly coated with wood primer to be fixed with wooden plugs , fixing 12mm thick waterproved ply on both sides(duro/greenlam or equivalent make) of the partition , finally fixing 1.0mm thick laminate on both sides of the partition with adhesive of approved brand providing 1mm groove at all joints as per the drawing supplied and as per the instruction of the EIC . double skin partition to be raised upto height of 1300 mm from the floor and the rest of the height upto ceiling height to be enclosed with 6mm thick glass factory made dualy edge polished and finished with silicon filling and all required sheet patch fittings if or whenever require to hold or join each pannel the surrounded area around all glass panes to be 35mmx15 mm thick wooden section claded with 12mm ply and finally finished in matching 1mm thick laminate complete with all required teak beading as required and directed .	Sqm	187
4	Providing & fixing 12mm thick factory made toughened glass of saint gobain make for fixed glass partition and / doors in all size and shapes with all required cuts and holes for stainless steel patch and low fitting spacers , duly edged and finished to use and complete in all aspects including filling the gap with silicon sealent for fixing patch fitting. steel [patch fittings locks , handles and floor machine etc .	Sqm	78
5	Supplying & fixing door closer/fittings of sizes as given below as per direction of officer in charge		
	a) Double cylinder floor spring (heavy duty-90kg)	Nos	25
	b) Top patch fitting of Ozone/Dorma/Closma or equivalent make	Nos	25
	c) Bottom patch fitting with strike plate of ozone /dorma/closma or equivalent/identical quality make.	Nos	25
	d) Corner patch lock of ozone /dorma/closma or equivalent make.	Nos	25
	e)H-type or D-type handle (25x300mm) of safex/Closma or equivalent make	Nos	25
6	Proving & fixing solar film frosted sparkle of Lummar/3m or equivalent make on toughned glass in approved design and pattern as per the drawing supplied or as per the instructions.	Sqm	70

7	Proving and fixing in position teak venner ply paneling made out of frame work 47x47mm M.S. tubes 18 G thickness fixed at floor placed at 450/600mm max c/c vertical and horizontal supported from existing wall/floor with appropriate and necessary dash fastners to ensure stability . 50mm thick glass wool wrapped in tissue paper duly filled before ply panneling . the panneling consist of 12mm , commercial ply with 4mm thick teak veneer , a;ll teak wood sections / teak veneer to be melamine polished and all frame of MS work to be properly welded including 1 coat of primer and one coat of synthetic enamel paint . complete in all aspects as per detail drawing and as directed by the concerned official	Sqm	210
8	Proving and fixing in position teak veneer ply paneling with appropriate and necessary dash fastners to ensure stability . The panneling consists of 12mm commercial ply with 4mm thick teak veneer , all teak wood section/ teak veneer to be melamine polished and all frame with 1 coat of primer and one coat of syntetic enamel paint complete in all aspects as per detail drawings and as directed by the concerned officials .	Sqm	100
9	Proving and fixing in position wooden paneling on side walls and windows at lift lobby area using 12mm BWR ply 4mm thick veneer 1st quality and melamine polish.	Sqm	78
10	Proving & fixing 5mm thick looking mirror of superior quality (Modigaurd/Atultuff/Saint Gobin make with 12mm thick commercial plywood in back of looking mirror and fixed to wooden cleats with CP brass screws & washers complete with 50 mm wide 2nd class teak wood ornamental beading all around the mirror including polishing 7 fixing with teak wood plugs etc complete as per the directions .	Sqm	10
11	Painting & polishing :Proving and applying three or more coats of best quality plastic/velvet paint (royal) of a[pproved manufacture and shade to wall surfaces etc applied evenly to give approved finsih , including preparation of surface (Wall Putty -2 coat or more) and coat of approved primer complete as per specifications to entire satisfaction of concerned officer for all levels & heights complete.	Sqm	1300
12	Providing & pasting imported graphic designer wallpaper of 0.5mm thickness on existing walls including adhesive etc complete as per approved design by concerned officer.	Sqm	125
13	External wall paint:Proving & applying 2 coat of Exterior weather coat with sealant and cement primer coat on external surface (apex)	Sqm	750

14	Providing and fixing vitrified floor tiles and skirting (100 mm height) in general & dry areas shall be of vitrified 600 x 600mm of approved colour laid on a bed 20mm thick cement mortar 1:3 (1 cement :3 coarse sand) finished with a flush pointing in tile grout with matching pigment including preparation of surface , cleaning etc complete (kajaria make or equivalent make.)	Sqm	845
15	Providing and fixing machine cut, mirror/ eggshell polished , Marble stone work for Floor, wall lining (veneer work) including dado, skirting, risers of steps etc., in required design and pattern wherever required, stones of different finished surface texture, on 12 mm (average) thick cement mortar 1:3 (1 cement : 3 coarse sand) laid and jointed with white cement slurry @ 3.3 kg/sqm including pointing with All the joints should be filled with matching color epoxy admixed with pigment of matching shade, including rubbing, curing, diamond polishing etc. all complete as per Architectural drawings, and as directed. (a) 18 mm thick Italian Marble stone slab,Perlato, Rosso verona, Fire Red or Dark Emperadore etc. as per choice. All complete.	Sqm	100
16	Providing and fixing flooring antiskid tiles of 07mm thick kajaria make or equivalent of approved colour & quality on over 1:3 cement mortar bed of 20mm thick.	Sqm	65
17	Providing and fixing Glazed Ceramic tiles of 300x450mm or 300x300mm as available up to height of 2100mm in toilets shall be used for dado/ wall tiles, of approved color and make, fixed on the wall with the help of adequate adhesive, finishing, cleaning etc complete. joints to be finished with tile grout with matching pigment etc. complete	Sqm	100
18	Providing and laying 20mm CPVC pipes with UV layer & Glass coating for external water supply & 16 mm polyethylene pack pipes for internal water supply with elbows, bends & T's limited to the building structure only.	Rmt	175
19	Providing and laying 40mm CPVC pipes with UV layer & Glass coating for external water supply & 16 mm polyethylene pack pipes for internal water supply with elbows, bends & T's limited to the building structure only.	Rmt	75
20	Providing & fixing automatic hand dryer of make Euronics/Aircare/or equivalent good quality make with speed up to 60m/s and minimum 1200 wts power in stainless steel body, complete as per the directions of the officer/ officer in charge.	Nos	4
21	Providing & fixing of manual type tissue paper dispenser of kimberley clark/Aircare or equivalent quality make in ABS body complete as per the directions of the officer/ officer in charge.	Nos	4

22	Providing & Fixing manual push type soap dispensar of kohler/kimberley clark/Aircare/or equivalent quality make with capacity of 1000ml in ABS body complete as per the directions of the officer or officer in charge	Nos	8
23	Providing & fixing unplastic pvc triple layer overhead water storage tank of approved brand including the inlet and outlet provision etc. Make Syntex or equivalent.	Ltr	2500
24	Providing & fixing wall hung type toilet with soft close seat and cover of size 560x365x355mm of kohler/ jaguar or equivalent make complete as per the direction of the officer in charge.	each	6
25	Providing & Fixing white colour wash basin of kohler/jaguar or equivalent make over granite counter complete as per the diirection of officer in charge.	each	8
26	Providing & fixing PVC concealed cistern with plate 8857 fitting & fixture of kohler/jaguar or equivalent make complete with all fitting etc, as per the direction of officer in charge.	each	6
27	Providing & fixing hand shower (health faucet)with metal hose & holder in polish crome of kohler/jaguar or equivalent make complete as per the direction of officer incharge.	each	6
28	Providing & fixing white vitreous wall hung urinal with concealed fitting of kohler/jaguar/Parryware/Hindware or equivalent make with back inlet and valve outlet including fixing to wall suitable brackets (set of 3 urinals with fittings) all as per manufacturer specifications and as per the direction of officer in charge. All Complete on turn key basis ready to use with fittings.	each	6
29	Providing & fixing unplasticied PVC connection pipe with brass unions 60cm length and 15mm nominal bore. As per the direction of officer in charge.	each	25
30	Providing & fixing anti cockroach floor trap grating of sizes etc complete as per the directions	each	12
31	Providing & fixing CP bottle trap of kohler/Jaguar or equivalent make etc complete as per the direction of officer in charge.		
	(a) 32 mm nominal bore	each	8
32	Providing & fixing CP single lever Lavatory Faucet or single hole single lever basin mixer with lever handle without drain of Kohler/Jaguar/Aircare or equivalent make complete as per the directions.		
	(a) 15mm Nominal bore.	each	10
33	Providing & Fixing CP brass toilet paper holder with flap etc of kohler/jaguar/ aircare or equivalent make as per the direction of the officer in charge.	each	4
34	Providing & fixing CP brass angular stop cork (angle valve) with flange for basin mixer/geyser point of kohler/jaguar or equivalent make as per the direction of the officer in charge.		
	(a) 15 mm nominal bore,IS 8931	each	45

36	Providing and Fixing of SS Lazer Cut Jali of upto 3mm thickness as per design including of fixing. All Complete	Sqm	8
37	Providing and Fixing Wall Paper (The waterproof/washable material was used)	Sqm	40
38	Providing and Fixing special quality designer rubber flooring in thickness of maximum upto 22mm depending upon available level of adjacent flooring in GyM and Creche area wherever required as per the details and drawing issued	Sqm	125.78
39	Providing and Fixing flamed granite stone fixed with adhesive over 12mm marine grade 100% water proof ply of Duro or equivalent	Sqm	10
40	Providing and Fixing wall penelling on GyM wall using 12mm BWP ply as base duly fixed with screws and fastners, 4mm teak veneer fixed with adhesive and headless nails with grooves as per required design and finally edges fixed with teak lipping in required width at various locations.	Sqm	44.64
41	Providing new Melamine Matt polish in required colour & shade over the above veneer panelling	Sqm	30
42	Providing and Fixing designer Rope Partition at various locations in the GyM area as per the drawing and pictures issued, using teak wood frame all around, stainless steel customised books for holding the designer rope, providing and fixing the said designer Rope in required colour/shade and finally polishing the wood frame around	Sqm	10
43	Providing & fixing 12mm thick MDF under wooden flooring to match the level of the rubber floor, including labour and material required.	Sqm	99.28
44	Providing and Fixing 12mm thick toughened glass doors complete with holes, handles, floor spring, SS patch fittings.	Sqm	18
45	Providing and Fixing 0.6mm thick aluminium sheets behind wooden cabinets & wall panelling for protection from seepage	Sqm	32.5
46	Providing and Supplying new reception table in the GyM as per design and specification	Sqm	1
47	Providing and Fixing 5mm thick extra clear mirror on gym walls as Glass panelling pasted with silicon on 12mm thick BWP play dule fixed with screws, complete including labour, ply, mirror and pasting fixing materials	Sqm	20
C	Temp Light Weighted Structure		
1	Superstructure : Designing, fabricating, supplying & erection at site (Roof top level i.e.upto 20 metre height) of pre engineered / prefabricated light weight single storey without staircase steel structure as follows:		
	The structure shall consist of works as under:-		

	<p>Structural Framework:- Fabrication and supply of the walls panels, roof trusses joists shall be all made up of roll-formed cold rolled lipped “C” steel sections of width 89mm or 150 mm made out sheet thickness ranging from 0.75mm to 1.20 mm with Zinc/Galvalume coating of 275GSM and steel yield strength of 550MPa i/c portal frame made of HR steel if required to accommodate large rooms including the base plate anchor bolts etc.</p>		
	<p>Purlin:- GI hot section/ Galvalume “C” section Runner: Cold rolled lipped “C” steel sections shall be provided @ interval of 750 mm c/c for hanging of lights / false ceiling . Roofing:- Metal profile PPGL 0.5mm TCT in colours as approved Roof Insulation:- 16kg/m³, 100mm thk Fiber glass roof insulation External Wall Cladding:- 12mm thick Heavy duty Fiber cement boards of exterior grade Building Paper – Breather Foil on external face of LGSF wall. Internal wall cladding:- 12 mm thick Normal fiber cement boards upto bottom of truss/joist, However the clear height of bottom of truss/joist shall not be less than 3.0 mtr from floor level . Internal Wall Lining – 12.5mm thk Gypsum Plaster board with necessary fixing with necessary screws and finishing with jointing compound and jointing tape etc. Wall Insulation:- 100mm thick mineral wool 48kg/m³ density. Suitable sun shades made out of 0.50 mm PPGL sheets will be provided to all external windows and doors not covered under verandah. The minimum projection for the sun shade shall be 450 mm and 300 mm wider than the width of the opening. Gutter and down take pipe:- Valley Gutter and down take pipe as per Architectural and as per actual requirements Finishing:- Ready to paint surface for interior & exterior including Jointing & a coat of cement primer Soffit and Eaves or equivalent Lining :- External Soffit and Eaves Lining with Fiber cement Boards. All civil work upto plinth level/Roof top level where the prefabricated structure to be erected shall be paid separately as per requirement & site conditions. The work shall be executed as per drawing enclosed. (The outside dimensions in plan of the light gauge metal frame shall be measured for working out the area payable under this item. However, cut-out/opening shall be deducted from the above measured areas. Nothing extra shall be paid for roof projections/ sunshades, or height.)</p>		

	(Note: Split up of components of this item is not permitted, all relevant works/items shall be of specialized LGSF original manufacturer preferably make Everest or equivalent and executed through OEM) The above work include removal / shifting of all services existing on the relevant area as per the instruction of officer - in -charge,	Sqm	350
2	CIVIL WORK: Excavation of Base Work on terrace & back filling of available excavated area with demolition of any RCC/Brick wall.	Sqm	400
	Providing RCC Plinth beam of 150 x 230mm with nominal reinforcement of 8mm TMT bars & M20 concrete for fixing of LGSF wall by means of anchor fastener.	Cum	11
	Providing & laying in position cement concrete in floor 1:3:6 (1 Cement: 3 Corase Sand : 6 Graded Stone Aggregate 20mm Nominal size) 75mm thick. With Water Proofing	Cum	12
	Plinth beam edge Protection of average 50mm thick 1:5:10 and 300mm in width (Sloping from 3 inches to 1 inch)	Cum	8
3	Flooring (Dry Area): Floor tiles and skirting (100 mm height) in general & dry areas shall be of Vitrified Tiles 800x800mm of approved color laid on a bed of 20mm thick cement mortar 1:3 (1Cement:3 Coarse sand) finished with a flush pointing in tile grout with matching pigment including preparation of surface, cleaning etc complete. (Base Price - Rs. 100/Sqft) (Kajaria/Somany/Nitco or equivalent make)	Sqm	450
4	Flooring (Wet Area): Toilet area - Minimum 7 mm thick antiskid tiles of Kajaria/Somany/NITCO/ make approved equivalent of approved colour & quality.	Sqm	50
5	Wall Tiling (Toilet Area): Glazed Ceramic Tiles of 300x450mm or 300x300mm as available up to height of 2100mm in toilets shall be used for Dado/ wall tiles, of approved color and Kajaria make, fixed on the wall with the help of adequate adhesive, finishing, cleaning etc complete. Joints to be finished with tile grout with matching pigment etc. Complete	Sqm	150
6	Water Proofing (Toilet wall area): Water proofing with plastomeric modified APP polymer memebrane reinforced with non woven fibre in Toilet areas upto 7ft height.	Sqm	200
7	Internal Wall Paint : Providing & applying 2 coat of Plastic Emulsion paint including a coat of primer (Asian Royale or equivalent).	Sqm	1350
8	External Wall Paint : Providing & applying 2 coat of Exterior weather coat with sealant and cement primer coat on external surface of fiber cement boards. (Asian Apex Ultima)	Sqm	750

9	<p>False Ceiling : Providing and fixing tiled false ceiling of approved materials of size 595x595 mm in true horizontal level, suspended on inter locking metal grid of hot dipped galvanized steel sections (galvanized @ 120 grams/ sqm, both side inclusive) consisting of main “T” runner with suitably spaced joints to get required length and of size 24x38 mm made from 0.30 mm thick (minimum) sheet, spaced at 1200 mm center to center and cross “T” of size 24x25 mm made of 0.30 mm thick (minimum) sheet, 1200 mm long spaced between main “T” at 600 mm center to center to form a grid of 1200x600 mm and secondary cross “T” of length 600 mm and size 24x25 mm made of 0.30 mm thick (minimum) sheet to be interlocked at middle of the 1200x600 mm panel to form grids of 600x600 mm and wall angle of size 24x24x0.3mm and laying false ceiling tiles of approved texture in the grid including, required cutting/making, opening for services like diffusers, grills, light fittings, fixtures, smoke detectors etc. Main “T” runners to be suspended from ceiling using GI slotted cleats of size 27 x 37 x 25 x 1.6 mm fixed to ceiling with 12.5 mm dia and 50 mm long dash fasteners, 4mm GI adjustable rods with galvanized butterfly level clips of size 85 x 30 x 0.8 mm spaced at 1200 mm center to center along main T, bottom exposed width of 24 mm of all T-sections shall be pre-painted with polyester paint, all complete for all heights as per specifications, drawings and as directed by Engineer-in-charge. GI Metal Ceiling Lay in plain Tegular edge Global white color tiles of size 595x595 mm, and 0.5 mm thick with 8 mm drop; made of GI sheet having galvanizing of 100 gms/sqm (both sides inclusive) and electro statically polyester powder coated of thickness 60 microns (minimum), including factory painted after bending.</p>	Sqm	290
10	Doors:		
	Doors: Flush doors with veneer/laminate on both sides.	Sqm	21
11	Windows: Sliding/fixed/casement window shall be provided with all fitments. The window frame and window shutter will be manufactured using suitable UPVC sections. The window shutter shall be provided with glazing of 08mm thk plain glass (double glass with gap between them of approx 50mm) fixed using rubber gasket.	Sqm	20
12	Electricals (Temp Structure): Providing electrical work comprising of PVC Conducing, Point wiring (Havells FRLS or equivalent), Modular Switches, Sockets with boxes & respective cover plate (Havells make or equivalent) (All other fittings & fixtures in concerned officials’ scope)	Sqm	350

FURNITURE, FIXTURES, INTERIOR PANELLING & MISCELLANEOUS			
1	Supply and placing in position centre table of the specification /size 1000mmx600mmx428mm with top panel thickness of 10mm thick toughned glass. The frame work/under structure of the table shall be of wooden frame. Glass top & bottom shelves shall be metal 1.2mm sheet cut froler design fixed with understructure complete as per manufacturer's specification and as per direction of officer.	Nos	2
2	Supply and placing in position main officer desk/table of the specification of size 2100mm (w) x 900mm (d)x 750mm (h).The table top shall be 25mm thick MFC (Melamine Faced Chipboard). The main table should be of duck noise profile edge in order to enhance the work space aesthetics. The material shall be as per manufacturer's specification and as per the direction of officer.	Nos	1
3	Supply and placing in position joining table of the specification /size 1200mm (w)x 600mm (d) x 750mm (h) with top panel thickness of 25mm using Melamine Faced Chipboard (MFC). The leg of joining table shall be as per manufacturer's specification and as per the direction of officer.	Nos	4
4	Providing and fixing file/storage cabinets in sizes as per design or site requirement made up of BWP block board (of different thickness as/design) finished in machine pressed laminate (colour / texture to be as decided by EIC / matching to the adjoining workstations/ wood work. A variation of upto 50mm in either dimention shall be tolerable for getting the desired product in mentioned makes. The inside to be finished in 1mm thick laminateor matching to theexteriors. A-class teak wood 4mm lipping/2mm thick taping shall be used as lipping etc.where ever required, to be polished to match same shade as laminate. Cabinets to be made as per drawing provided with all fittings and fixtures such as telescopic channels, hinges, magnatic catchers (hettich make) and handles (S.S brushed finish), proper locking mechanism, pad lock with steel/nickel finish, of godrej/doorset/harison or equivalent make etc.all complete. The cabinet shall be mounted either on floor or wall using 6-12mm waterproof ply (duro or equivalent) as backing with wooden anchors (gitti) placed @ 300mm C/C on wall. The item shall include making god any holes, wire managers + fixing on wall whatever required.		
	a) Having depth of up to 350mm	Sqm	20
	b) Having depth of up to 450mm	Sqm	10
	c) Having depth of up to 600mm including modular stainless steel basket & fitting suitable for below counter kitchen/pantry cabinets for pantry.	Sqm	42

5	<p>Providing & supplying magazine & newspaper racks for the office use, in size 36" height and 12" width made out of 19mm BWP ply fixed with 4mm thick veneer and 1mm thick laminate as per design, duly polished at all edges with teak wood margin having shelves and or pockets as per the size of magazines or publications the stand should be free standing without being mounted on any walls with provision of stand or legs as per design.</p>	each	1
6	<p>Supply of premium chair for computer tables with overall dimension(w) 49cm (d) 63cm (h) 81.5cm and seat height (SH) 44-56cm (adjustable). The seat/back shall be made up of 1.2cm thick hot pressed plywood upholstered with poly viscose fabric (67% polyester + 33% Viscose), (colour and texture as decided) or polyester bearing the weight of 330gm/m for a span of 1.2 meter. The seat and back shall be made out of molded polyurethane foamwith PVC lipping all round. The seat (size- 49cm (w) x 44cm (d)) should have a waterfall edge and back (Size- 50cm (w) x 49cm (h)) foam shall be made of black integral skin polyurethane with 50-70 "A" hardness and reinfrced with MS insert. The armrests shall be scratch and weather resistant. The armrests shall be fitted to the seat with seat/armrests connectiong strip assembly made of 0.5cm thick HR Steel. The center pivot mechanism shall be designed with features 3600 revolving type. 17" maximum tilt on pivot at center. tilt tension adjustment telescopic type and injection molded in black polypropylene. The base shall be in chrome (glossy) finish and fitted with 5 nos twin wheel castors. (castor wheel dia 5.0cm). The pedestal shall be of 65cm pitch center dia (75.0cm with castors) The twin wheel castors should be injection molded in black nylon for trouble free movement. To be placed on 3rd & 4th floor at newly created office area.</p>	each	50
7	<p>Supply of premium chair for officer's sitting with overall dimension(w) 600mm (d) 550mm (h) 1200mm and seat height (SH) 550-750mm (adjustable). The seat/back shall be made up of 1.2cm thick hot pressed plywood upholstered with poly viscose fabric (67% polyester + 33% Viscose), (colour and texture as decided) or polyester bearing the weight of 330gm/m for a span of 1.2 meter. The seat and back shall be made out of molded polyurethane foamwith PVC lipping all round. The seat (size- 49cm (w) x 44cm (d)) should have a waterfall edge and back (Size- 50cm (w) x 49cm (h)) foam shall be made of black integral skin polyurethane with 50-70 "A" hardness and reinfrced with MS insert. The armrests shall be scratch and weather resistant. The armrests shall be fitted to the seat with seat/armrests connectiong strip assembly made of 0.5cm thick HR Steel. The center pivot mechanism shall be designed with features 3600 revolving type. 17" maximum tilt on pivot at center. tilt tension adjustment telescopic type and injection molded in</p>	each	18

	black polypropylene. The base shall be in chrome (glossy) finish and fitted with 5 nos twin wheel castors. (castor wheel dia 5.0cm). The pedestal shall be of 65cm pitch center dia (75.0cm with castors) The twin wheel castors should be injection molded in black nylon for trouble free movement.		
8	Supply of premium chair for visitor's sitting with overall dimension(w) 550mm (d) 500cm (h) 950mm and seat height (SH) 450-600cm (adjustable). The seat/back shall be made up of 1.2cm thick hot pressed plywood upholstered with poly viscose fabric (67% polyster + 33% Viscose), (colour and texture as decided) or polyester bearing the weight of 330gm/m for a span of 1.2 meter. The seat and back shall be made out of molded polyurethane foamwith PVC lipping all round. The seat (size- 49cm (w) x 44cm (d)) should have a waterfall edge and back (Size- 50cm (w) x 49cm (h)) foam shall be made of black integral skin polyurethane with 50-70 "A" hardness and reinfrced with MS insert. The armrests shall be scratch and weather resistant. The armrests shall be fitted to the seat with seat/armrests connectiong strip assembly made of 0.5cm thick HR Steel. The center pivot mechanism shall be designed with features 3600 revolving type. 17" maximum tilt on pivot at center. tilt tension adjustment telescopic type and injection molded in black polypropylene. The base shall be in chrome (glossy) finish and fitted with 5 nos twin wheel castors. (castor wheel dia 5.0cm). The pedestal shall be of 65cm pitch center dia (75.0cm with castors) The twin wheel castors should be injection molded in black nylon for trouble free movement.	each	25
9	<u>Specifications for lounge sofa sets:</u> Supplying one, two and three seated sofa sets of specified size and dimension . Seat rest,Back rest and Side arms assembly consists of a fabricated inner frame assembly with moulded polyurethane foam having density = 45 ± 2 Kg./cm which provides strength as well as comfort to the sofa. The complete moulded backrest assembly is covered with a replaceable fabric upholstery cover. Three seated sofa shall have overall size of 1800L x 740 D x 740 H mm Two seated sofa shall have overall size of 1300L x 740 D x 740 H mm One seated sofa shall have overall size of 600L x 740 D x 740 H mm. All material should be used of relevant ISI specification and as approved by the concerned officials.		
	single seater sofa	each	2
	2-seater sofa for reception area(w) 93cm (l) 250cm (h)45 cm	each	3
	3-seater sofa for reception area(w) 93cm (l) 250cm (h)45 cm	each	2

10	<p><u>Specifications for centre table :</u></p> <p>The centre table should be of premium quality. It should be 0.95 cm thick float glass with high Quality teak wood framing / MS ERU high quality chrome plated framing. Material should be used of relevant ISI specification and as approved by the concerned officer. Approx. Size shall be 1200mm(W)x1200mm(D)x425mm(H)(min). NOTE: The side table & centretable should be from the same model/alike.</p>	Nos	1
11	<p><u>Specifications for side table :</u> The centre table should be of premium quality. It should be 0.95 cm thick float glass with high Quality teak wood framing / MS ERU high quality chrome plated framing. Material should be used of relevant ISI specification and as approved by the concerned officer. Approx. Size shall be of 550mm (W) x 550mm (D) x425mm(H)(min) NOTE: The side table & centretable should be from the same model/alike.</p>	Nos	6
12	<p><u>Conference table</u> :-Providing and fixing <u>CONFERENCE ROOM Table</u> with the following specifications:- The table is to be supplied in completely knock down conditions for assembly at site. The construction of the main table shall be free standing structure constructed with the help of mini-fix dowels and pins. The table should be made up of min 32mm thick MDF board with balancing laminate. Top is finished with 1.0mm thick Merion or Equeivalent Laminate. The table should have soft edge .The foil shall be coated with PU layer for better scratch and wear resistance. MDF Board shall be of Interior Grade as per IS 12406 : 2003 The table connections have to be made in such a way that no gaps should be seen in between the tables. The provision of Wire carrier shall be as per manufacturer specifications. Table shall be made in following configuration:-</p>		
	1) Conference Table 8 Seater (3200 mm x 1500 mm)	Nos	1

13	<p>Providing and Supplying of ergonomically designed fabric upholstered high back revolving chair for Conference Room. The Seat and Back Cushion of the chairs should be pressed on 12mm hot press moulded ply. The seat cushion of the chair should be made up of 50mm thick High Density of 45±2 Kg/m³ polyurethane mould and back cushion should be made up of 38mm thick High Density 33±2 Kg/m³. The polyurethane foam shall be as per manufacturer's specification. The hardness of foam shall be 20 kg on hampden machine and 25% compression and it should be covered with fabric as per manufacturer's shade card. (Fabric colour shall be approved by concern official) The arms of the chairs should be black as per manufacturer specification. The Gas lift mechanism should be tested as per BIFMA X 05.01.2002 Standards. The tilting mechanism should be synchro-tilt mechanism as per international ergonomics standards any position locking. The pedestal should be five legged injection moulded in black 30% glass -filled nylon and fitted with 5 nos twin wheel castors. The castors of the chairs should be glass filled, twin wheel castors confirming to BIFMA Standards X 05.01.2002 tested to perform 1,00,000 cycles with 225 lbs Load. NOTE:The back and base of chair should be supplied with black polypropylene moulded covers. (Fabric colour shall be approved by concern official)Overall Height of chair should be minimum 1225 mm (Inclusive of maximum adjustment of gas lift mechanism) All material should be used of relevant ISI specification and as approved by the concerned officer.</p>	Nos	12
14	<p>Specifications for fixed base cushion chair for conference room : The back chairs for the conference rooms and meeting rooms shall be low back chair. The arms of the chairs should be black . The chair shall be supplied with PU moulded seat and back .The under structure should be made of tubular cantilever type MS ERW tube black powder coated. The chair shall be supplied with fabric of approved make and shade for seat and back. Note - The back and base of the chair should be supplied with fabric upholstered. All material should be used of relevant ISI specification The dimensions of the chairs should be as follows: Overall Height of chair : 890 mm max. The chair should be preferably the same model/alike as that of conference room chair.</p>	Nos	12

15	<p>Providing and Fixing back painted Toughened Glass on wall for writing board, name board etc; as per details below and as per the detailed working drawing :-</p> <p>(i) toughened glass for using as writing board - 04 Nos (ii) toughened glass based sign board for display of Names and tenure etc. using sticker based material as per specified nomenclature - 04 Nos (iii) sign board using 19mm BWR Board & veneer with polish covered with toughened glass of same size using stickers/film pasted using stainless steel spacers as approved - 02 Nos</p>	sqm	6
16	<p>Providing and fixing Acoustic Panel of 9mm thickness in appropriate complete fixing on existing surface and with approved color as per design and drawing</p>	sqm	40
17	<p>Supplying and installation of modular computer work unit of minimum dimension 1500mm (W) x 600mm (D) x 760mm (H) with side table unit approx size 1000x600mmx760mm a 50mm thick panel oneither sides of total ht 1500mm.A variation of + -300mm either side shall be tolerable as/availability of product in mentioned makes. The work station shall be made up of 19mm BWP block board (in different thicknesses as per requirement of the design) finished in machine pressed 1.0mm laminate color as decided by the client. The side and rear, 1500mm high partition panel of 50mm width, made up of multiple layers of 12mm / 19mm block board with outer finished paneling of laminate and tackable fabric as per the drawing provided. This partition member shall have in it a hollow space to run the Data and power cables, + space for recessed switch plate as per drawing provided, the said partition panels to have partly toughened glass verticals as design elements. The tack-able fabric shall be mounted on 12mm soft board including a set of trays with it. The color and texture of laminate, fabric etc. shall be a combination (asper the design or choice of the office in charge) as decided by buyer. The unit shall have a cabinets / drawers unit as per drawing provided. The drawers shall be supported on telescopic runners of hettich / ozone equivalent make. The lower portion shall have hinged shutter doors as per drawing, with spring loaded self closing hinges of hettich or equivalent make. All the drawers, cabinets shall have a tumbler locking mechanism classic furniture pad lock with steel/ nickel finish, of godrej / doorset / harison or equivalent make. All the handles shall be S.S brushed finish and to be as per approval by buyer/ client . The flat exposed edges shall be sealed with 4mm thick teak wood lipping duly duco painted in matching colour to the laminate around. The unit shall be complete in all respect including</p>	nos.	32

	making space & provisions for electrical agency for laying of wiring (telephone, power, data and voice) in provided raceways and provisions for fixing of switch plates, switches, sockets etc. The complete unit shall be having wire managers, required accessories etc. to be installed as directed.		
	Note : The dimensions of the work station will be refer as per the drawing details provided in the layout.		
18	Providing and fixing Executive Work Station with approx height 750-780mm of and giving main work station approx size 2250 x 750mm with side table unit approx size 1200x450mm with ample storage provisions as per drawing & design, the entire unit to be in 19mm thick BWP block board pasted with 1.0mm thick designer laminate, all edges to be sealed with teak wood margin duly duco painted matching to the colour& finish of the adjoining laminate, the side enclosing partition to be in 50mm thickness clayed with 1.0mm thick designer laminate, all cable & wire managers to be provided along with required electrical points, switches & sockets, computer jacks & punches, etc. All required hardware with locks & handles and channels to be used, complete in all respects and ready to use Complete with Oaken Glow (officer cabins) (approx 32 sqm) and View Max Screen (approx 20 sqm) etc as required	nos.	15
19	Providing & supplying modular folding food serving imported designer light weight trolley in wooden finish shelves, MS Round pipe powder coated frame and wire baskets complete on wheels as per drawing.	each	0
20	Providing & supplying fridge (300 ltrs) for storing minor soft drinks, juices or water bottles for placing inside wooden pantry cabinet.	each	2
21	Providing wood work (Second class teak wood) in frames of doors, windows and other frames and fixed in position with hold fast lugs or with dash fasteners of required dia & length.	CUM	9.25
22	Malamine polish with finish in gloss/matt of required shade over wooden surface including preparation of surface complete.	SQM	100.00
23	Providing & fixing 9mm th. Accoustic panels as per design & pattern on 12mm th. Wooden plyboard fixed on 50mm x 50mm hardwood frame.	SQM	100.00
24	Providing & installation of 6mm th. Loop pile carpet on steps	Sqm	150.00
25	Supply,Installation ,testing & Commissioning (SITC) of up to 300mm plastic body fresh air fan in the existing opening i/c making the hole to suit the size of above fan making good th edamages connections testing commissioning etc as required.	each	2
26	Double side 12mmPly on wooden frame partition	Sqm	150
27	Single side 12mm ply on wooden frame partiton	Sqm	80

28	Providing & Fixing 4mm Veneer on existing ply Partition with Melamine Polish	Sqm	60
29	Providing & fixing 12mm ply panelling on side walls without frame with top finishing of 1mm laminate	Sqm	60
30	Sink for Pantry	No.s	2
31	Black enamel paint on MS angles and flats	Sqm	325
32	Panelling with 12mm ply on walls finished with laquer glass	Sqm	200
33	Providing and installation of Latherite panelling over 12mm ply base	Sqm	150
34	3D Panelling over 12mm ply base on wooden frame with cove	Sqm	100
35	Providing and fixing tiled carpets in conference hall	Sqm	21
	Sub Total for (A TO C + FURNITURE)		
D	DETAILS OF AUDIO VISUAL EQUIPMENT/ITEMS		
	DISPLAY ITEMS		
1	HD LED 65" Displays with wall mount (samsung or equivalent commercial model) with installation including stand and allied any other item. All Complete	DM75 E	1
2	HD LED 55" Displays with swivel wall mount (Panasonic or equivalent make commercial model) with installation including stand and allied any item. All Complete	DC55 E	2
	Sub Total for (D)		
E	Fire Alarm System		
1	Supplying and fixing of following sizes of steel conduit along with accessories in surface/recess including painting in case of surface conduit or cutting the wall and making good the same in case of recessed conduit as required.		
(a)	20 mm	mtr	250
(b)	25 mm	mtr	120
2	Supplying and drawing following size of FRLS PVC insulated copper conductor,Single core cable in the existing surface/recessed steel/ PVC conduit as required.		
(a)	2x1.5 sq.mm	mtr	470
3	Supplying ,installation ,testing and commssioning of nalog addressable fire alarm control panel (FACP) with battery charger and battery backup for 8 hours normal operations and one hour alarm operations. The FACP shall include a full featured operator interface control and annunciation panel that shall include a backlit 640 character liquid crystal display, and a QWERTY Style alphanumeric keypad for the for the fire alarm system. The panel should be equipped with sufficient numbers of loop shall have a capacity of minimum 159 detectors and 159 modules in one loop. The panelshall be UL listed and FM approved and comply UL 864, 9th Edition requirement. The enclosure shall be UL listed. The	Nos	2

	quoted rate shall include include supply of necessary software and hardware for programming the panel with all necessary license.		
4	Supply,Installation,testing & commissioning of analogue addressable photo electric type smoke detector with mounting base, address switch complete as required.	Nos	60
5	Addressable Hooter (sound output of Minimum 90db) cum strobe (strength of light 10cd) with control module complete as required.	Nos	4
6	Supply,fixing,testing and commissioning of flush type response indicator with red coloured neon lamp	Nos	10
7	Supplying,fixing testing and commissioning of addressable Manual call point complete with address switch (Not break glass units)	Nos	10
	Sub Total (E)		
F	VRF AIRCONDITIONING SYSTEM		
S.No.	Description	Units	BOQ Quantity
1	Installation of Variable Refridgerant Flow System		
	Supply of 24 HP Heat Pump type -top Discharge - 100% INVERTER	Nos	4
2	INDOOR UNIT		
	Supply of Indoor units address setting and capacity as		
	4 way cassette with wired/corded remote		
(a)	1.59 TR/2.0 HP	Nos	6
(b)	2.0 TR/2.5 HP	Nos	6
(c)	2.65 TR/3.0 HP	Nos	6
(d)	3.2 TR/4.0 HP	Nos	8
3	Hi Wall Units		
	1.5 HP	Nos	6
	2.0 HP	Nos	5
4	Y-Joints	Nos	45
5	Split 100% Cool only wall mounted Air conditioners make mitsubishi		
(a)	1.8TR	Nos	01
(b)	1.5 TR	Nos	01
(c)	1.0 TR	Nos	01
	Airconditioning Systems requirements for Installations		
6	Installation Modular type set free outdoor units equipped with highly efficient scroll compressors.		
7	Installation,Testing and commissioning outdoor unit		
	24 hp	Nos	4
	INDOOR UNITS		
	Installation,testing and commissioning of SET FREE INDOOR Units address setting and capacity as mentioned below		

8	Cassette Units		
(a)	1.59 TR/2.0 HP	Nos	6
(b)	2.0 TR/2.5 HP	Nos	6
(c)	2.65 TR/3.0 HP	Nos	6
(d)	3.0 TR/4.0 HP	Nos	8
9	Hi Wall Units		
(a)	Wall Mounted Split Type :1.5 HP	Nos	6
(b)	Wall Mounted Split Type 2.0 HP	Nos	5
(c)	Corded Remote	Nos	37
(d)	MS stand for outdoor unit mounting	Nos	4
10	Refridgerant Piping,Drain Piping and cabling		
	Spply Installation testing and commissioning of interconnecting refrigerant pipe work with (19mm/13 mm thick)		
(a)	41.3 (with 19 mm insulation)	RMT	70
(b)	34.9 (With 19 mm insulation)	RMT	90
(c)	28.6 (With 19 mm insulation)	RMT	75
(d)	22.2 (With 19 mm insulation)	RMT	85
(e)	19.1 (With 19 mm insulation)	RMT	65
(f)	15.9 (With 19 mm insulation)	RMT	130
(g)	12.7 (With 19 mm insulation)	RMT	75
(h)	9.5 (With 19 mm insulation)	RMT	125
(i)	6.4 (With 19 mm insulation)	RMT	75
	Cable Tray		
11	Providing and fixing of GI cable tray with properly support complete with GI threaded		
(a)	Cable tray for copper piping (300 mm)	RMT	55
(b)	Cable tray for copper piping (150mm)	RMT	35
12	Supply,Installation,testing & commissioning of Refnet Joints	Nos	40
13	Providing and fixing rigid PVC piping complete with fittings,supports as per HITACHI standards		
(a)	32 mm dia	RMT	96
(b)	40 mm dia	RMT	55
106	Supply & Fixing of control cum transmission wiring of copper conductor cable		
(a)	2 C X .75 Sq mm	RMT	450
14	Cassette Frames -Welding	Nos	16
15	Supply, installation, Testing and Commissioning of FIVE star rating split type AC unit of 2.0 TR capacity working on 230 volts AC supply with OUTDOOR Unit stand copper piping upto 4 metre i.e. fixing of drain pipe making electrical connection complete etc as required (MAKE HITACHI/O GENERAL/MITSUBISHI/TOSHIBA)	Each	4

16	Supply, installation, Testing and Commissioning of FIVE star rating split type AC unit of 1.5 TR capacity working on 230 volts AC supply with OUTDOOR Unit stand copper piping upto 4 metre i.e. fixing of drain pipe making electrical connection complete etc as required (MAKE HITACHI/O GENERAL/MITSUBISHI/TOSHIBA)	Each	4
17	Supplying, Installation, Testing and Commissioning of Wall Mount Type 5KVA Voltage Stabilizer with input of 160-300 Volt and Output of 200- 240 Volts with under voltage and high voltage cutt-off and with TDR etc. complete as reqd.	Each	8
18	Supply, Installation, Testing and Commissioning of additional referigerent copper piping of required size alongwith insulation, wiring and drain piping, complete etc. as required.	Meter	500
19	Supply & installationof indoor CCTV camera with 2.0 MP HD incl. SMPS, BNC connector	No.s	16.00
Sub Total (F)			
G	Electricals		
1	Wiring for Light point/ Fan point/ exhaust fan point/call bell point with 1.5 sq. mm FRSL PVC insulated copper conductor single core cable in surface/ recessed PVC conduit, with modular switch, modular plate, suitable GI box and earthing the point with 1.5 sq. mm. FRLS PVC insulated copper conductor single core cable etc as required. a) Group C	Point	150
2	Wiring for twin control light point with 1.5 sq mm FRSL PVC insulated copper conductor single core cable in surface/recessed steel conduit, 2 way modular switch, modular plate. Suitable GI box and earthing the point with 1.5sq mm. FRSL PVC insulated copper conductor single core cable etc as required.	Point	5
3	Wiring for group controlled (looped) light `point/fan point/exhaust fan point/call bell point (without independent switch etc) with 1.5 sq mm FRLS PVC insulated copper condcutor single core cable in surface/recessed steel conduit, and earthing the point with 1.5 sq mm FRLS PVC inculated copper conductor single core cable etc as required	point	350
4	Wiring for circuit/submain wiring alongwith earth wire with the following sizes of FRLS PVC insulated copper conductor, single core cable in surface/recessed Steel conduit as required a) 2x2.5 sqm mm + 1x1.5 sq mm earth wire	Meter	650
5	Wiring for circuit/ submain wiring along earth wire with the following size of FRLS PVC insulated copper consuctor, single core cable in surface/ recessed medium class PVC conduct as required a) 4 X 2.5 sq. mm + 1 X 2.5 sq. earth wire.	Meter	100

6	Supplying and fixing of following fixed for medium class PVC conduit along with accessories in surface/recess including cutting the wall and making good the same in case of recessed conduit as required . 20 mm dia.	Meter	100
7	Supplying and fixing of following sized for medium class PVC conduit along with accessories in surface/recess including cutting the wall and making good the same in case of recessed conduit as required . 25 mm dia.	Meter	210
8	Supplying and fixing suitable size GI box with modular plate and cover in front on surface or in recess, including providing and fixing 3 pin 5/6 amps modular socket outlet and 5/6 amps modular switch, connection etc. as required. (For light plugs to be used in non residential buildings.	Each	75
9	Supplying and fixing suitable size GI box with modular plate and cover in front on surface or in recess, including providing and fixing 6 pin 15/16 amps modular socket outlet and 15/16 amps modular switch, connection etc. as required.	Each	60
10	Wiring for light/power plug with 2x4 sq mm FRLS PVC insulated copper conductor single core cable in surface/recessed Steel conduit alongwith 1 No.4 sq mm FRLS PVC insulated copper conductor single core cable for loop earthing as required	Meter	160
11	Wiring for light / power plug with 2X4 sq.mm FRLS PVC insulated copper conductor single core cable in surface. Recessed medium class PVC conduit along with 2 No 4 sq. mm FRLS PVC insulated copper conductor single core cable for loop earthing as required.	Meter	25
12	Wiring for light/power plug with 4x4 sq mm FRLS PVC insulated copper conductor single core cable in surface/recessed Steel conduit alongwith 2 No.4 sq mm FRLS PVC insulated copper conductor single core cable for loop earthing as required	Meter	65
13	Wiring for light / power plug with 4X4 sq.mm FRLS PVC insulated copper conductor single core cable in surface. Recessed medium class PVC conduit along with 1 No 4 sq. mm FRLS PVC insulated copper conductor single core cable for loop earthing as required.	Meter	75
14	Wiring for circuit/submain wiring alongwith earth wire with the following sizes of FRLS PVC insulated copper conductor, single core cable in surface/recessed steel conduit as required 2x6 sqmm + 1x6 sqmm earth wire	Meter	100
15	Wiring for circuit/submain wiring alongwith earth wire with the following sizes of FRLS PVC insulated copper conductor, single core cable in surface/ recessed medium class PVC conduit as required 4X6 sq.mm + 2X6 sq mm earth wire	Meter	25

16	Supplying & fixing of modular blanking plate on the existing modular plate & switch box excluding modular plate etc. as required.	Each	100
17	Supplying and fixing suitable size GI box with modular plate and cover in front on surface of in recess including providing and fixing 25 A modular socket outlet and 25 A modular SP MCB, "C" curve including connections, painting etc. as required.	Each	22
18	Supply, Installation, testing and commissioning of pre-wired, flurocent fitting/ compact florescent fitting of all types, with all accessories and tube etc. directly on ceiling/ wall, including connection with 1.5 sq.mm FR PVC insulated, copper conductor, single core cable and earthing etc. as required.	Nos.	50
19	Installation, testing and commissioning of ceiling fan, including wiring the down fods of standard length (upto 30 cm) with 1.5 sqmm FRLS PVC insulated, copper conductor , single core cable etc as required.	Nos.	12
20	Installation of exhaust fan in the existing fan in the existing opening, including making good the damage, connection, testing, commissioning etc. as required upto 450 mm sweep.	Nos.	2
21	Suppling and fixing two module stepped type electronic fan regulator on the ecisting modular plate switch box including connections but excluding modular plate etc. as required.	Nos.	12
22	Supply of LED better suitable for conduit/surface/suspended mounting, a stand alone fixture with power consumption of maximum 41W producing lumen output of 4000 lumens or more having an integral driver with THD<10% and PF>0.9 excellent efficiency of 90 lm.W and 50000 hrs of life at L70 i.e. the lumen output of fiture reduces to 70% of its original output after 50000 hrs. Complete with all accessories etc. as reqd Make : OSRAM - Simplitz BTN ACH1200A, Philips BN 208C LED 40/CDL L1200 FR, Trilux RIDOS OT LED 4000-840 ET, Thron Propack LED 4500-840 HF.	Nos.	25
23	Supply of recessed LED light fixture of size not less than 590x 590x77 mm having minium lumen out put of 3300 lumens & maximum 43 watt, driver efficiency more than 80% , pf- more then 0.9 slall have elegant, craca powder coated housing body with high transitivity opal diffuser cover etc. The fixture shall have in built protection against over voltage, short circuit, over load and miss-wiring with high effeciency and low power- loss. The fixture shall be suitable for WHITE LIGHT (5700 -6500k), CRI >80, color light. The fixture, coplete with its driver etc as required. make philips - RC365BLED33 -5000PSU ODYH, OSRAM LUX POWER F, GE -GCR043 -56NO(42W), Zumtobel - MELLOW Light V LED (39W)	Nos.	50

24	Supply of Surface mounted LED downlighter, the power consumption of fixture is 15 -18 W and producing a lumen out put of 1100 lumen. The fixtur has Mid Power LED'S integrated with an efficient optical system to provide high DLOR. Construction of fixture is High Efficiency White Refelector along with High Transitive in Diffuser and CRI > 70 Complete with all accessories etc. as reqd. Make : OSRAM/ PHILIPS/GE/ ZUMTOBEL.	Nos.	80
25	Supply of recess mounted LED downlighter, the power consumption of fixture is upto 15 W and producing a lumen out put of upto 1100 lumen. The fixtur has Mid Power LED'S integrated with an efficient optical system to provide high DLOR. Construction of fixture is High Efficiency White Refelector along with High Transitive in Diffuser and CRI > 70Complete with all accessories etc. as reqd. Make : OSRAM/PHILIPS/GE/ZUMTOBEL.	Nos.	45
26	Supply , Installation , Testing and Commissioning of LED street light wattage of 40-45 W IP66 with minimum system lumen output of 3400 lumenx, CCT> 5500k, CRI >70 and efficacy of minimum 85 lumen/ watt having pressure diecast aliminium ally housing, life of LED's should be 50,000 burnings hrs. Surge protection upto 4kV with heat resistant toughened glass/polycarbonate complete with all accessories etc as required.	Nos.	6
27	Supply of upto 450mm sweep heavy duty exhaust fan complet with louvers etc.	Nos	2
28	Supplying and fixing following way, single pole and neutral, sheet steel, MCB distribution board, 240 volts, on surface/recess, complete with tined copper bus bar, neutral bus bar, earth bar, din bar, interconnections, powder painted including earthing etc. as required (But without MCB/RCCB/Isolator) a) 12 Way, Double Door	Each	2
29	Supplying and fixing following way, single pole and neutral, sheet steel, MCB distribution board, 415 volts, on surface/recess, complete with tined copper bus bar, neutral bus bar, earth bar, din bar, interconnections, powder painted including earthing etc as required (But without MCB/RCCB/Isolator) a) 8 Way (4+24), Double door	Each	4
30	Supplying and Fixing following rating, double pole, 240 Volts, RCCB in the existing MCB DB complete with connections, testing and commissioning etc. as required 40 Amps	Each	4
31	RCCB 4 pole in 40amp	Each	4
32	Supplying and Fixing following rating, double pole, 415 Volts, RCCB in the existing MCB DB complete with connections, testing and commissioning etc. as required 63 Amps	Each	4
33	RCCB 4 pole in 63amp	Each	4

34	Supplying and Fixing 5 amps to 32 amps rating 240 Volts, C series, Miniature Circuit Breaker suitable for inductive loads of following poles in the existing MCB DB complete with connections, testing and commissioning etc as required a) Single Pole	Each	120
35	Supply and Fixing of single pole blanking plate in the existing MCB DB complete etc as required	Each	20
36	Supply and installation for electrical panel with 1no of CT Meter, 2 no of 63 Amp 10 KA MCCB, 2 no of 100 AMP 16 KA MCCB, 200A buzz bar, Volt & Amp meter and required thimbles, Indicator Lights and other accessories including incoming 200 AMP 4 core 4 pole MCCB 25 KA	Set	1
37	Supplying of following sizes of XLPE insulated Aluminum conductor Armoured cable , 1.1 KV grade cables conforming to relevant IS code and TECHNICAL specifications.		
	a) 2x10 sqm mm XLPE insulated AI conductor armoured cable	Meter	25
	b) 3.5x50 sq mm XLPE insulated AI, conductor armoured cable	Meter	30
	c) 3.5 X 95 sqmm. XLPE insulated AI. Conductor armoured cable	Meter	25
	d) 4X25 sqmm. XLPE insulated AI. Conductor armoured cable	Meter	30
38	Supplying of following sizes of XLPE insulated Copper conductor Armoured cable , 1.1 KV grade cables conforming to relevant IS code and TECHNICAL specifications.		
	a) 4x10 sqm mm XLPE insulated CU conductor armoured cable	Meter	78
	b) 4X16 sqmm. XLPE insulated CU. Conductor armoured cable	Meter	35
39	Laying of one number PVC insulated and PVC sheathed/ XLPE power cable of 1.1 KV grade of following size in the existing RCC/ HUME/ METEL pipe as required..		
	a) upto 35 sqmm.	Meter	25
	b) Above 35 sq mm and upto 95 mm	Meter	10
40	Laying of one number PVC insulated and PVC sheathed/ XLPE power cable of 1.1 KV grade of following size on wall surface as required.		
	a) upto 35 sqmm.	Meter	40
	b) Above 35 Sqmm and upto 95 sq.mm	Meter	38
41	Supplying and making indoor end termination with brass compression gland and aluminium lugs for following size of PVC insulated and PVC sheathed/ XLPE aluminium conductor cable of 1.1KV grade as required.		
	a) 2x10sq.mm	set	15
	b) 3.5x50 sq mm	set	4
	c) 3.5 X 95 sqmm. XLPE insulated AI. Conductor armoured cable	Set	4
	d) 4 x 10 sq.mm	Set	10

	e) 4 x 16 sq.mm	set	6
	b) 4X 25 sqmm.	Set	0
42	Providing and Fixing 6 SWG dia G.I. wire on surface or in recess for loop earthing along with eisting surface/ recessed conduit/submain/cable as required.	Meter	100
43	Providing and Fixing 8 SWG dia Copper wire on surface or in recess for loop earthing along with existing surface/recessed conduit/submain/cable as required.	Meter	100
44	Earthing with G.I. Earth plate 600mmx600mmx6mm thick including accessories and providing masonry enclosure with cover plate having locking arrangement and watering pipe of 2.7 metre long etc with charcoal/coke and salt as required.	Sets	3
45	Providing and Fixing 25mm x 5mm G.I. strip in 40mm dia G.I. pipe from earth electrode including connection with G.I. nut, bolt, spring, washer excavation and re-filling etc as required	Meter	75
46	Providing and Fixing 25mmx5mm G.I. strip on surface or in recess for connections etc as required	Meter	50
47	a) 1 or 2 Module (75mm x 75mm)	Each	40
	b) 4 Module (125mm x 75mm)	Each	25
	c) 8 Module (125mm x 125mm)	Each	32
48	Supplying and Fixing following modular switch/socket on the existing modular plate and switch box including connections but excluding modular plate etc as required		
49	a) 5/6 A Switch	Each	50
	b) 15/16 A Switch	Each	25
	c) 3 pin 5/6 A socket outlet	Each	25
	d) 6 pin 15/16 A Socket Outlet	Each	25
	e) Telephone Socket Outlet	Each	60
	f) usb outlet /port	Each	60
50	Supply and Fixing Testing and Commissioning of Modular RJ-45 with data outlet socket with grid and cover plate in suitable size of 16 SWG GI Box	Each	15
51	Supplying and Drawing of UTP 4 pair CAT 6 LAN Cable in the existing surface/recessed Steel/PVC conduit as required. - 1 RUN	Meter	1200
52	Supply and installation of 16 Port DVR with 2TB Harddisk for Camera Management	No.s	1.00
53	Supply and installation of wiring for required CCTV cameras	RMT	350.00
54	Supply and fixing of compact type mirror light fitting suitable for energy efficient 12 W led lamp along with all accessories i/c S/F 1 no 7 watt led lamp directly on wall connection etc as reqd	each	8
55	SITC of designer hanging lights above conference table in the main conference room/ hall of maximum size up to 750mmx 200mmx200mm fabricated out of fabric or glass on MS powder coated round or square bar frame fitted with CFL or LED bulbs as per design.	each	7

56	SITC of profile LED light fitting in 24mm x 26mm aluminium channels fitted with LED bulbs upto 100pc in each running meter length with SMPS of up to 120 watts max as required in wooden or pop false ceiling.	mtr	12
57	SITC 4 x 10sqmm + 1 x 6sqmm FRLS copper cable in PVC conduit including termination	RMT	250.00
58	Supplying and fixing of following ways surface / races mounting 12 way (4+12),Double door	No.s	4
59	Providing and fixing 25L Gyeser for Toilet & Pantry	No.s	4
60	Providing & Fixing 6W Lights	No.s	10
61	Providing & Fixing LED Strip Lights in Coves.	Rmt	250
62	SITC profile lights of size 50mm x 75mm in class room corridor	No.s	20
63	Providing and installing weatherproof electrical box on terrace for AC units	No.s	10
64	Providing & Installing buzz bars	No.s	2
	Sub Total (G)		
	Total Amount		
	Add : Applicable GST		
	Grand Total Amount (In Rupees)		

2.0 Technical Bid

Technical Bid consists of all technical details along with commercial terms and conditions. This bid also covers minimum eligibility criteria and required documents as mentioned below. Documents should be on the letter head of the Bidder.

Note:- It is made clear that no part of financial bid should be reflected or disclosed in technical bid in any manner. If so found, the tender will be summarily rejected by FSSAI.

Eligibility Criteria for Technical Bid:

3.0 The Bidder must have an established permanent setup (submit company profile/details indicating location/office address with proof).

3.1 **Tender fees:** Cost of tender fee is Rs.500/- (non-refundable) in the form of Demand draft/Pay order drawn on any Nationalized Bank in favour of Senior Accounts Officer, FSSAI, payable at New Delhi 110002

3.2 **Earnest Money Deposit (EMD)/Bid Security:** Earnest Money Deposit is for Rs.18,00,000/- (Rupees Eighteen Lakhs Only) (non-bearing interest). The EMD shall be paid in the form of demand draft/banker's cheque/Fixed Deposit Receipt/Bank Guarantee issued by a nationalized bank/Scheduled Commercial Bank in an acceptable form in favour of **Sr.Accounts Officer, FSSAI** payable at **New Delhi**. However,

- 3.3 Tender offers received without EMD shall be rejected straightway and will not be considered. EMD of tendering agency who submits the sealed quotation but withdraw the same before expiry of the tender validity date may be forfeited at the discretion of FSSAI.
- 3.4 **Firm's Registration:** Bidder must be registered for Income tax/possession of PAN, GST, ESI & PPF/EPF valid registration. (Attach supportive document viz copy of Regn).
- 3.5 The person signing the tender document on behalf of the agency, shall attach with the tender a proper power of Attorney, duly executed, stating that he has the authority to bind in all the matters pertaining to the contract, including the arbitration clause.
- 3.6 The bidding firm/agency/company should be an Indian Firm/Agency/Company of Indian origin having been incorporated/in existence for the minimum period of five years as on date of tender document. (attach supportive documentary proof indicating existence date).
- 3.7 The bidding establishments should be a registered with CPWD under composite category (i) having authorisation to undertake project/work valuing Rs.5.00 crore and more (i.e. financially sustained of similar categories of class-III or above of CPWD) and (ii) interested PSUs, having permanent set up/office in Delhi/New Delhi or in Mumbai (attach supporting document as proof).
- 3.8 The bidding agency should have an annual turnover of Rs.500 Lakhs or more during the preceding three financial years viz 2016-2017, 2017-2018, 2018-2019
- 3.9 The bidding firm/agency/company must have successfully done/completed in any of the government departments/organizations/foreign missions in India for works/services during the past five years with the following criteria :-
- (i) Three composite works of Rs.1.75 crore each (At least two works should be composite similar building works and one work can be any composite/civil/Electrical / E&M services work excluding maintenance work)
Or
 - (ii) Two Composite similar works of building of Rs.2.50 crore each
Or
 - (iii) One Composite similar work of building of Rs.5.00 crore or more.

(Attach copies of work order along with works completion certificates in support).

The Composite work of building means Civil Building Work including either internal electrification or one of the E&M & other services mentioned below under one agreement:-

- (i) Fire Fighting
- (ii) Fire Alarm
- (iii) HVAC Air Conditioning

- (iv) Lift
- (v) Electrical Sub Station
- (vi) DG Set
- (vii) Interior Work

4.0 The agency and its associated subsidiaries should not have been blacklisted by any agency or involved in any pending government investigation directly for corruption or unfair trade practices etc (**Separate undertaking to be submitted by the bidder**).

4.1 Vendors should have MOU/authorisation back up with a principle technology partner (OEM – Original Equipment Manufacturer/authorised distributors/dealers) for various Audio/Visual Equipment/Items and Mitsubishi/Hitachi brands VRF Air conditioning System with capacity of 50 tons or more who covers up all technological part are only eligible to participate.

Desirable Criteria

4.2 The bidding agency/firm/company having valid ISO certification will be given preference.

4.3 The bidders having past experience of carrying out supply and installation of Audio/Visual Equipment/system for conference halls and VRF Air conditioning system along with the prescribed other works will be given preference.

5.0 **Financial Bid**

5.1 Financial bid should **quote Unit rate of description of goods** (in quantity) in the format, Price Bid Format at Annexure–5 enclosed, figures in Indian rupees (in words also). In-complete bids will be rejected summarily.

5.2 Rates quoted shall be clearly indicating all statutory duties and taxes etc. as applicable. Price quoted shall be firm and any variation in rates, prices or terms during the validity of the offer may lead to forfeiture of the EMD and in case no specific taxes are mentioned the prices quoted shall be considered as inclusive of taxes.

6.0 **Documents**

Bid documents may be submitted in the agency’s letter head/Covering letter containing the following documents: -

- Annexure – 1 : Tender Form
- Annexure – 2 : Bidder’s profile
- Annexure – 3 : Financial Status
- Annexure – 4 : Letter of authority
- Annexure – 5 : Financial Bid
- Annexure – 6 : Performance Security (Bank Guarantee)
- Annexure – 7 : Check List for Bidders

7.0 **Site visit:** The probable bidders, if they intend to visit the site of work on any working day between Monday to Friday (1100 hrs – 1630 hrs) to assess the proposed requirement/job of work, they may do so with the permission of the Asstt Dir (GA) before submission of the bid by due date.

Part – III

Standard Conditions of RFP – May be referred for standard terms of RFP

The bidder is required to give confirmation of their acceptance of the Standard Conditions of the Request for Proposal mentioned below which will automatically be considered as part of the Contract/Work Order concluded with the successful Bidder (i.e. contractor in the contract), as selected by the FSSAI. Failure to do so may result in rejection of the Bid submitted by the Bidder.

1. General Conditions

1.1. **Law:** The Contract shall be considered and made in accordance with the laws of the Republic of India. The contract shall be governed by and interpreted in accordance with the laws of the Republic of India.

1.2. **Effective Date of the Contract:** The contract shall come into effect on the date of signatures of both the parties on the contract (Effective Date) i.e. from the date of award of work and shall remain valid until the completion of the obligations of the parties under the contract. The deliveries and supplies and performance of the services shall commence from the effective date of the contract. **(All the specified works and services, supply of items etc; shall be completed within 30 Days from the effective date of contract.)**

1.3. **Penalty for use of Undue influence:** The Seller/selected bidder undertakes that he has not given, offered or promised to give, directly or indirectly, any gift, consideration, reward, commission, fees, brokerage or inducement to any person in service of the Buyer or otherwise in procuring the Contracts or forbearing to do or for having done or forborne to do any act in relation to the obtaining or execution of the present Contract or any other Contract with the Government of India for showing or forbearing to show favour or disfavour to any person in relation to the present Contract or any other Contract with the Government of India. Any breach of the aforesaid undertaking by the Seller or any one employed by him or acting on his behalf (whether with or without the knowledge of the Seller) or the commission of any offers by the Seller or anyone employed by him or acting on his behalf, as defined in Chapter IX of the Indian Penal Code, 1860 or the Prevention of Corruption Act, 1986 or any other Act enacted for the prevention of corruption shall entitle the Buyer i.e. FSSAI to cancel the contract and all or any other contracts with the Seller and recover from the Seller the amount of any loss arising from such cancellation. A decision of the Buyer or his nominee to the effect that a breach of the undertaking had been committed shall be final and binding on the Seller. Giving or offering of any gift, bribe or inducement or any attempt at any such act on behalf of the Seller towards any officer/employee of the Buyer or to any other person in a position to influence any officer/employee of the Buyer for showing any favour in relation to this or any other contract, shall render the Seller to such liability/ penalty as the Buyer may deem proper, including but not limited to termination of the contract, imposition of penal damages, forfeiture of the Bank Guarantee and refund of the amounts paid by the Buyer.

1.4. **Access to Books of Accounts:** In case it is found to the satisfaction of the Buyer that the Seller has engaged an Agent or paid commission or influenced any person to obtain the contract as described in clauses relating to Agents/Agency Commission and

penalty for use of undue influence, the Seller, on a specific request of the Buyer, shall provide necessary information/ inspection of the relevant financial documents/information.

1.5. **Non-disclosure of Contract documents:** Except with the written consent of the Buyer/ Seller, other party shall not disclose the contract or any provision, specification, plan, design, pattern, sample or information thereof to any third party except where required by the law of the land.

1.6. **Liquidated Damages:** In the event of the Seller's failure to submit the Bonds, Guarantees and Documents, supply the goods/items/services and conduct trials, installation of equipment, training, etc as specified in this contract, the Buyer may, at his discretion, withhold any payment until the completion of the contract. The BUYER i.e. FSSAI may also deduct from the SELLER/Selected Bidder as agreed, liquidated damages to the sum of 0.5% of the contract price of the delayed/undelivered stores/services mentioned above for every week of delay or part of a week, subject to the maximum value of the Liquidated Damages being not higher than 10% of the value of delayed stores/works/services.

1.7 **Termination of Contract:** The FSSAI shall have the right to terminate this Contract in part or in full in any of the following cases:-

(a) The delivery of the material or required works and services is/are delayed for causes not attributable to Force Majeure for more than one week after the scheduled delivery/work/services.

(b) The Contractor is declared bankrupt or becomes insolvent.

(c) The completion of work is delayed due to causes of Force Majeure by more than 10 days provided Force Majeure clause is included in contract.

(d) The FSSAI has noticed that the selected agency/Contractor has utilised the services of any Indian/Foreign agent in getting this contract and paid any commission to such individual/company etc.

(e) There is undue & wilful delay in supply of required material for the work resulting delay in completion of the work by the expected schedule as agreed upon.

(f) As per decision of the Arbitration Tribunal.

(g) Non-compliance of applicable statutory obligations, as per law of land by contractor/selected firm.

2. **Notices:** Any notice required or permitted by the contract shall be written in the Hindi or English languages and may be delivered personally or may be sent by FAX or registered pre-paid mail/airmail/e-mail, addressed to the last known address of the party to whom it is sent.

3. **Transfer and Sub-letting:** The Contractor has no right to give, bargain, sell, assign or sublet or otherwise dispose of the Contract or any part thereof, as well as to give or to let a third party take benefit or advantage of the present Contract or any part thereof.

4. **Patents and other Industrial Property Rights:** The prices stated in the present Contract shall be deemed to include all amounts payable for the use of patents, copyrights, registered charges, trademarks and payments for any other industrial property rights. The Contractor shall indemnify the FSSAI against all claims from a third party at any time on account of the infringement of any or all the rights mentioned in the previous paragraphs, whether such claims arise in respect of manufacture or use. The Contractor shall be responsible for the completion of the supplies including spares, tools, technical literature and training aggregates irrespective of the fact of infringement of the supplies, irrespective of the fact of infringement of any or all the rights mentioned above.

5. **Amendments:** No provision of present Contract shall be changed or modified in any way (including this provision) either in whole or in part except by an instrument in writing made after the date of this Contract and signed on behalf of both the parties and which expressly states to amend the present Contract.

6. **Taxes and Duties**

All bidders are to adhere to the existing GST provisions and any other tax related law of land and after award of contract any deviation or addition on this count shall not be entertained and the bidder shall be responsible for his acts and deeds.

Part IV – Special Conditions of RFP

The Bidder is required to give confirmation of their acceptance of Special Conditions of the RFP mentioned below which will automatically be considered as part of the Contract concluded with the successful Bidder (i.e. Contractor in the Contract) as selected by the FSSAI. Failure to do so may result in rejection of Bid submitted by the Bidder.

1. **Performance Guarantee:** The Bidder will be required to furnish a Performance Guarantee by way of Bank Guarantee through a public sector bank or a private sector bank authorized to conduct government business (ICICI Bank Ltd., Axis Bank Ltd or HDFC Bank Ltd.) for a sum equal to 10% of the contract value within 15 days of receipt of the confirmed order. Performance Bank Guarantee (PBG) should be valid for 120 days beyond the tentative date of completion of entire work. PBG may also be furnished in the form of a Bank Draft/Bankers' Cheque or Fixed Deposit Receipt if the successful bidder wishes to. The specimen of PBG is given in Annexure-6 attached to this RFP. The Performance Bank Guarantee shall be considered open upon receipt by the FSSAI's Bank. In case any claims or any other contract obligations are outstanding, the selected contractor will extend the Performance Bank Guarantee as asked for by the FSSAI till such time as the Contractor settles all claims and completes all contract obligations. The Performance Bank Guarantee will be subject to encashment by the FSSAI and shall be refunded after successful discharging of all obligations relating to the contract. In case the conditions regarding adherence to delivery schedule, carrying out the desired work/services, settlement of claims and other provisions of the contract are not fulfilled by the Contractor, the same would be adjusted from the available PBG. In case the selected agency fails to discharge its committed liability for any reason, the defect will be removed by FSSAI on its own and the amount deposited shall be forfeited in addition to Legal Course of affairs as per law of land against the Indemnity submitted.

2. **Option Clause:** The contract will have an Option Clause, wherein the FSSAI can exercise an option to procure an additional 50% of the original contracted quantity in accordance with the same terms & conditions of the present contract. This will be applicable within the currency of contract. The Bidder is to confirm the acceptance of the same for inclusion in the contract. It will be entirely the discretion of the FSSAI to exercise this option or not.

3. **Repeat Order Clause** – The contract will have a Repeat Order Clause, wherein the FSSAI can order upto 50% quantity of the items under the present contract within six months from the date of supply/successful completion of this contract, the cost, terms & conditions remaining the same. The Bidder is to confirm acceptance of this clause. It will be entirely the discretion of the FSSAI to place the Repeat order or not.

4. **Tolerance Clause** – To take care of any change in the requirement during the period starting from issue of RFP till placement of the contract, FSSAI reserves the right to 20% plus/minus increase or decrease the quantity of the required goods upto that limit without any change in the terms & conditions and prices quoted by the Contractor. While awarding the contract, the quantity ordered can be increased or decreased by the FSSAI within this tolerance limit.

5. Failure of the successful bidder to comply with any of the requirements of above clauses shall constitute sufficient grounds for the annulment of the award and forfeiture of Bid Security.

6. **Payment Terms** : The payment to the selected Contractor will be made as per following schedule: -

(a) 30% Advance of total cost - against submission of Bank Guarantee or Fixed Deposit in favour of Sr. Accounts Officer, FSSAI of an equivalent amount. The same will be released on completion of 30% work. This will be in addition to PBG @10% of the contract value.

(b) 20% Advance of total cost – after completion of approx 50% work as per given specifications/details within the stipulated time frame and to the satisfaction of buyer i.e. FSSAI.

(b) Balance 50% - On completion of entire works and Services/infrastructure as specified and removal of all items/leftovers from site subject to satisfaction of Head (GA & Legal), FSSAI and/or AD(GA), FSSAI HQ. However, the selected agency shall be required to submit an indemnity bond on Rs.100/- e-stamp paper giving undertaking/guarantee for providing assurance on the entire works/services/supplied items etc, done under this RFP for a period of one year from the date of submission of final bill.

7. **Paying Authority:**

Paying Authority will be Accounts Division, FSSAI, 3rd Floor, FDA Bhavan, New Delhi-110 002 by Sr AO (F&A). The payment of bills will be made on submission of the following documents by the selected Contractor along with the bill:

- (i) Ink-signed copy of bill/Invoice
- (ii) Copy of Supply Order/Contract
- (iii) Job Completion Certificate
- (iv) Performance Bank Guarantee in acceptable form
- (v) Details for electronic payment viz Account holder's name, Bank name, Branch name and address, Account type, Account number, IFSC code, MICR code

8. FORCE MAJEURE

8.1 In the event of either party being rendered unable/helpless by Force Majeure to perform any obligation required by them under the contract, the relative obligation of the party affected by such Force Majeure shall be suspended for the period during which such cause lasts. It is clarified that in case, the Force Majeure event occurs due to negligence of agency, then the provisions of this clause shall not apply.

8.2 Upon the occurrence of such cause and upon its termination, the party alleging that it has been rendered unable/helpless as aforesaid thereby, shall notify to the other party in writing within 07 (Seven) days of the alleged beginning and ending thereof giving full particulars and satisfactory proof. If deliveries are suspended under Force Majeure conditions lasting for more than 2 (two) months, FSSAI shall have the option of cancelling this contract in whole or part at its discretion without any liability on its part.

9. APPLICABLE LAW AND JURISDICTION

All matters connected with this work shall be governed by the Indian law both substantive and procedural, for the time being in force and shall be subject to the exclusive jurisdiction of Indian Courts at Delhi and/or Mumbai.

10. Other Conditions/Guidelines

Miscellaneous jobs/works to be carried out during the currency of contract :-

- (a) All the material used for the subject work shall be of ISI mark as per approved specifications/make and safe to use.
- (b) All electrical cables/connectors/switchboards panel, switches, sockets, telephone/fax/Internet lines will be of ISI or as per the good quality specifications/norms of well renowned make such as RR Kabel/Havel's, Roma Modular, Anchor or equivalent and their laying will be completely covered, safe and tamper proof to avoid any chance for short-circuit/accident etc.
- (c) The routine Upkeep and Clean-up of the complete infrastructure while carrying out the work shall be carried out every morning and evening so as to avoid any spreading of waste material/items/empties and construction material etc.

(d) The Cleaning Process will be carried out by using the mechanical/electrical devices by the experienced staff and manual means should be engaged during the work in progress period by the selected agency.

(e) If the performance of the selected Agency is not found satisfactory during the validity of the contract, FSSAI reserves the right to cancel the contract unilaterally at any stage and no claim of damage etc from the selected Agency will be entitled.

(f) The actual date of commencement of work will be reckoned from the date of signing of the Agreement/acceptance of work order.

(g) The Selected Agency would indemnify FSSAI against any loss of property or life/injury or any kind of accident, fire etc during the execution of the contract.

(h) The bidder shall include for the provision of all labour, materials, tools, supplies, equipment, services, facilities, supervision, administration, works contract tax, licenses, permits, insurances, bonds and any other tax/levy as may be applicable, incidentals and all other things necessary to perform and incidental to the performance of the work in strict accordance with the contract documents to the satisfaction of the Architect/ Consultants and Owner i.e. FSSAI.

11. **Statutory Conditions of the Contract(Applicable in case of Successful Bidder)**

1. The contractor shall be responsible for all commissions and omissions on part of work force engaged for the purpose conduct of the event. The FSSAI shall not be responsible in any manner whatsoever, in matter of injury/death/health etc. of the contractor's employees performing duties under this contract.

2. The contractor shall be obliged and solely responsible to comply with all statutory security requirements in respect of manpower engaged by the firm and FSSAI shall not be a party to any dispute arising out of such deployment by the contractor.

3. The work force deployed by the contractor under this contract shall be the employee of the contractor and in no circumstance shall have any claim of employment with the FSSAI.

4. **Affidavit.** An affidavit (on e-stamp paper of Rs. 10/-) is required to be submitted by the successful bidder regarding the fact that the persons employed by the contractor for the outsourcing in relation to the conduct of the proposed work/services be the employees of the bidder for all the intents and purposes and, in no case shall be a relationship of employer-employee between the said persons and the FSSAI shall accrue implicitly and explicitly and the bidder shall also be solely responsible for providing all the statutory benefit to the personnel employed by it. The affidavit should also contain a declaration that bidder shall make payment of compensation under the Workmen's Compensation Act-1923, Industrial Dispute Act-1947, Minimum Wages Act-1936, 1948 or any other applicable Acts or Enactments in case of injury or death of any of its workers while at work or otherwise due to contractors directions/any other job. The affidavit should also contain a declaration that the bidder shall take care all other statutory liabilities & obligations as well in the most sincere manner and shall solely be responsible for the same.

Part V – Evaluation Criteria & Price Bid issues

1. EVALUATION CRITERIA:

Determination of responsiveness

- 1.1 Prior to the financial evaluation of bids, FSSAI will determine whether each bid is substantially responsive to the requirement of bidding documents.
- 1.2 For the purpose of the above clause, the bid should conform to all the terms, conditions, and specifications of the bidding documents without material deviation. A material deviation is one which affects/limits in any substantial way the scope, quality, or performance of works and/or is inconsistent with the bidding documents.
- 1.3 Eligibility of tenderer will be based on proof of past experience, financial capability, resource availability, which should form the technical offer by fulfilling the requisite qualifying requirement as mentioned above. The technical offer of the firm would be evaluated by the Technical Evaluation Committee (TEC). The financial/commercial offers will be opened only in respect of the bidders who qualify the technical bid requirements as per the tender details.
- 1.4 No error, overwriting, / correction shall be permissible unless attested under the signature of the bidder with date and seal.

2.0 TECHNICAL & FINANCIAL EVALUATION.

2.1 Selection Procedure & criteria:

The technical bid evaluation shall be done based on the following criteria:-

- (i) The responsiveness of the bid, i.e; Annexure duly filled, signed and accepted bid documents in complete form, including Authorisation letter.
 - (ii) Receipt of valid EMD & Tender Fee with requisite amount in acceptable format.
 - (iii) Documents in proof of meeting the minimum eligibility criteria.
 - (iv) Any other documents as required to support the responsiveness of the bidder as per tender.
- 2.2 A substantially responsive bid shall be the one that meets the requirements of the bidding document in totality. The technical bid not meeting the minimum requirements as per the tender documents shall be rejected and their financial bids will be returned unopened.
 - 2.3 The bidder who qualifies at the technical evaluation stage shall only be called at the time of opening of financial bids. FSSAI shall intimate the bidders, the time/venue for the financial Bid opening through written and/or telephonic communication/or email.

3.0 Evaluation of bids:

- 3.1 The Authority may reject all the bids if these are found to be unresponsive or unsuitable either because these represent major deficiencies in complying with the tender requirements or it is perceived that substantively higher rates are quoted.
- 3.2 Validity of Tender: Tender shall be valid for acceptance for a period not less than 120 days since tender opening date.

4.0 Award of Contract:

- 4.1 FSSAI will award the contract to the tenderer whose tender has been determined to be substantially responsive.
- 4.2 By the process of evaluation of technical bids and financial bids, the Lowest Bid will be decided upon the lowest total price quoted by the particular bidder as per the Financial Bid Performa Annexed to this Tender enquiry. The successful bidder will be selected based on the overall aggregate low price. The consideration of taxes and duties in evaluation process (including those for which certificate of exemption are issued) quoted by the bidders will be considered. The ultimate total cost to the buyer would be the deciding factor for ranking of bids. All columns/guidelines of the Financial Bids shall be filled in by the bidder and no column should be left blank.
- 4.3 If there is a discrepancy between the unit price and the total price that is obtained by multiplying the unit price and quantity, the unit price will prevail and the total price will accordingly be corrected. If there is a discrepancy between words and figures, the amount in words will prevail for calculation of price.
- 4.4 The Lowest Acceptable Bid will be considered further for placement of contract/ Supply Order after complete clarification and price negotiations as decided by the Buyer i.e. FSSAI. The Buyer will also have the right to award contracts to different Bidders for being lowest in particular items, if considered appropriate/necessary. The Buyer also reserves the right to do Apportionment of Quantity, if it is convinced that Lowest Bidder is not in a position to supply full quantity in stipulated time.

Tender Form

To

The Assistant Director (GA)
Food Safety and Standard Authority of India
Ministry of Health & Family Welfare,
FDA Bhawan, Kotla Road,
New Delhi-110002

Ref. Your Tender No. _____
dated _____

1. We, the undersigned have examined the above Tender Document, No. _____, dated _____(if any), *description of the goods and services*) in conformity with your above referred document.

2. If our Tender is accepted, we undertake to perform the services as mentioned above.

3. We agree to keep our tender valid for acceptance as required in the Tender document or for subsequently extended period, if any agreed to by us. We also accordingly confirm to abide by this Tender up to the aforesaid period and this Tender may be accepted any time before the expiry of the aforesaid period. We further confirm that, until a formal contract is executed, this Tender read with your written acceptance thereof within the aforesaid period shall constitute a binding contract between us.

4. We further understand that you are not bound to accept the lowest or any tender you may receive against your above-referred Tender enquiry.

5. We confirm that we do not stand deregistered/banned/blacklisted by any Central/State Government

6. Brief of court/legal cases pending, if any, are following:

7. We confirm that we fully agree to the terms and conditions specified in above mentioned Tender documents, including amendment/ corrigendum if any.

(Signature with date)

(Name and designation) Duly
authorised to sign Tender for and on
behalf of bidder with company seal.

BIDDER'S PROFILE:

1.	Name of firm:	
2.	Bidder's name	
3.	Registered office address	
4.	Correspondence address	
5.	Telephone: Office – Residence Mobile No.	
6.	E-mail address & website	
7.	Tele-fax Number	
8.	VAT RegnNo.	
9.	Service Tax Regn No.	
10.	PAN Number	
11.	STRUCTURE AND ORGANIZATION The applicant is (a) an individual (b) a proprietary firm (c) a firm in partnership (d) a Limited Company or Corporation. (Pl attach attested copies of documents of registration / incorporation of your firm)	

I / We hereby declare that the information furnished above is true and correct.

Place:

Date:

Signature of Bidder / Authorized signatory
Name of the Bidder

(Seal of the Bidder)

FINANCIAL STATUS

Name of the Bidder _____

Description	Financial Years		
	2016-17	2017-18	2018-19
Annual Turnover			
Net Worth			
Current Assets			
Current Liabilities			
Total Revenues			
Profit Before Tax			
Profit After Tax			

1. Attach the copies of the audited balance sheets, including all related notes and income statement for the last three Financial Years as indicated above complying with the following conditions:
2. All such documents reflect the financial situation of the bidder and not sister or parent companies.

SIGNATURE OF THE BIDDER WITH SEAL AND DATE

LETTER OF AUTHORITY

PROFORMA FOR LETTER OF AUTHORITY FOR ATTENDING MEETING.

No.

Date:

The Asstt Dir (GA),
FDA Bhawan, 3rd floor,
KotlaRaod,
New Delhi-110002

Dear Sir,

We _____ hereby authorize following representative(s) to attend Technical bid opening & Price bid opening and for any other correspondence and communication against above Bid Document:

1) Name & Designation _____ Signature

2) Name & Designation _____ Signature

We confirm that we shall be bound by all commitments made by aforementioned authorised representatives.

Yours faithfully,

Signature

Name & Designation

For and on behalf of

Note: This letter of authority should be on the letterhead of the bidder and should be signed by a person competent and having the power of attorney to bind the bidder. Not more than two persons are permitted to attend Techno –commercial un-priced and Price bid opening.

Financial/Price - Bid**INVITING BIDS FOR SPRUCING UP AND MISC WORKS IN FDA BHAWAN
KOTLA ROAD, NEW DELHI-110002**

{Refer to Part-II para 1.0 of Tender Notice and quote unit rate of description of goods (in quantity) as mentioned (Scope of Work) of tender Notice}.

S.No.	Description	Units	Tentative Quantity	Unit Rate (in Rs.)	Total Amount (in Rs.)
A	Civil Work				
1	Demolishing of Brick Work Manually /by mechanical means including stacking of servicable material and disposal of unservicable material from site as per direction of concerened official . A) Cement mortar	Cum	100		
2	Demolishing/Chipping of Exiting Stone/Tiles from Floor Manually/by mechanical means including disposal of unservicable material &usable material to be stake at site as per directions	Sqm	441		
3	Removal of Malba by mechanical transport including loading , unloading and stacking at site for all lead and lift complete as per directions of concerned officer.	Cum	145		
4	Providing and laying in position Cement Concrete 1:4:8 (1 cement:4 coarse sand:8 graded stone aggregate 20 mm nominal size of coarse sand excluding the cost of centering and shuttering .	Cum	45		
5	Brick work with bricks of class designation 75 in super structure in cement mortar 1:6 (1 cement :6 coarse sand of zone II)	Cum	85		
6	Half Brick Masonry with bricks of class designation 75 insuper structure above plinth level in cement mortar 1:4 (1 cement :4 coarse sand of zone II)	Sqm	195		
7	15 mm cement plaster of mix ; 1:5 (1 cement : 5 fine sand of zone IV) including galvanized chicken wire mesh (24 gauge 12mm size) to junctions of concrete mansory work and other locations including cutting to required sizes , side laps of minimum 75 mm and fixing in position with galvanised iron wire nails , complete on ceiling or wherever required .	Sqm	1200		

8	Providing & fixing 18mm thick gang-sawcut, mirror polished, prepolished machine cut for kitchen platform vanity counter, window sills, fascia and similar locations of required size approved shade, colour & texture laid over 20mm thick base cement mortar 1:4 (1: cement :4 coarse sand) joints treated with white cement, mixed matching pigment, epoxy touch ups, including rubbing, curing and complete at all levels.				
	(a) Granite of any colour of shade, area of slab over 0.50 sqm	Sqm	80		
9	Providing edge moulding to 18mm thick gang saw cut for kitchen platform vanity counter, window sills, fascias and similar locations for required size including rubbing, moulding and polishing to edge to give high gloss finish etc. Complete at all levels.				
	(a) Granite work	Rmt	110		
10	Providing & filing of low density material - cinder etc to raise the floor for race way etc.	Cum	15		
11	Providing & fixing tiled false ceiling of approved materials of size 595x595mmx15mm in true horizontal level suspended on interlocking Dune Supreme Microlook consisting on main Trunner with suitable space joints to get required length of size 24x38 mm made from .30mm thick minimum sheet spaced at 1200mm center to center and crossed T of size 24x25 mm made of .30 mm thick sheet. 1200 mm long space between main T at 600mm center to center to form a grid of 1200x600mm and secondary cross T of 600 mm and size 24x25mm made of .30 mm thick sheet to be interlocked at middle of the 1200x600mm panel to form grid of 600 x 600 mm and wall angle of size 24x24x.3mm and laying false ceiling tiles of approved texture in the grid. including required cutting / making opening of services like diffusers, grids, light fittings, fixtures, smoke detectors etc. Main T suspended using GI slotted cleats of 27x37x25x1.6mm fixed to ceiling with 12.5mm dia and 50mm long dash fasteners, 4mm GI adjustable rods with galvanised butterfly level clips of size 85x30x.8mm spaced at 1200 mm center to center along main T, bottom exposed to width of 24mm of all sections shall be pre painted	Sqm	800		

	with polyster paint , all complete for all heights as per specifications , drawings and as directed by engineer . GI metal ceiling lay in plane tegular edge global white colour tiles of size 595x595 mm , and .5mm thick and 8mm drop , made of GI sheet having galvanising of 100m gms /sgm both size inclusive and electro statically polyster powder coated of thickness 60 microns minimum, including factory painted after bending.				
12	Proving 20mm thick plaster of paris (gypsum anhydrous) ceiling up to height of 4m above floor level including coves and moulduing as per sample approved consisting of frame work made of special sections power pressed from MS sheet with galvanised coating consisting of ceiling angle hanger of 20x20x.5mm thick of required length 1and fixed to ceiling dash fastner and other end with hanging arrangmemt GI channels 45 x25 x.9mm , 5 nos member running to which ceiling section 0.5mm thick bottom rail of 80 mm tapered flenge of 26mm each fixed with self taping screw running in a direction perpendicular to GI channel fixed with self taping screw@ 400c/c and perimeter angle 20x20x.5mm fixed to wall with rawl plugs @ 900 mm c/c providing and fixing SS grade 304 wire gauge with wire of dia ,5mm mesh fixed to wedge shape ceiling section i/c cutting & making smooteh service scaffolding etc all complete as per directions of officer incharge	Sqm	475		
13	Structural Steel Work (Supply & installation MS steel) built up sections riveted or welded in trusses & frame work including cutting, fixing & hosting in position and applying priming coat of steel primer.	KG	18000		
14	Suppling, drilling, cleaning hole in RCC & fixing HILTI make Mechanical fastner HST3 M12x 125	EACH	600.00		
15	Suppling, drilling, cleaning hole in RCC & fixing HILTI make Mechanical fastner HST3 M10 x 100	EACH	600.00		
16	Suppling, drilling, cleaning hole in RCC & fixing HILTI make Mechanical fastner HST3 M16 x 160	EACH	400.00		
17	Dismantling doors, windows and clerestory windows (steel or wood) shutter including chowkhats, architrave, holdfasts etc. complete	SQM	125.00		

	and stacking within 50 metres lead				
16	Providing & fixing Chicken Wire mesh	SQM	728.00		
17	Providing & applying 6 mm- 10mm th. average POP Punning/ Gyp Plaster on walls	SQM	1625.00		
18	Providing & laying RCC in 1 : 1.5 : 3 (1 Cement : 2 Course Sand : 4 Stone aggregate) with 8mm dia. Bars in counters & lintels at different locations.	Cum	70.00		
19	Providing & fixing merine ply shuttering with struts & props in counters & lintels	Sqm	100.00		
20	Providing, cutting & binding the steel reinforcement bars	Kg	200.00		
21	Providing and fixing precoated iron profile sheet in requisite profile (as directed by site incharge) of 0.95mm thickness (+/- 0.05%). Sheet will be painted with red oxide primer on both sides.	Kg	3500.00		
22	Providing and fixing of Water-Proofing in Toilets	Sqm	125		
23	Providing & applying of pest control including Anti Termite treatment in the existing Building/ premisses and surrounded open areas and drains.	Sqm	850		
	Sub Total (A)				
B	Door & window				
1	Door & window: Fixed/Shutter UPVC window shall be provided with all fitments. The window/door frame and shutter will be manufacture using suitable UPVC section. The window shutter shall be provided with glazing of duag 20mm (5mm +10mm air gap + 5mm thick) thick toughned glass fixed using rubber gasket.	Sqm	86		
2	Proving and fixing 35mm thick BWP flush doors cladded and pasted with 1mm designer laminate(greenlaam / century). On either sides with 38mmx4mm thick real wood margin on all sides fixed with new hinges , push button round lock in SS finish and all other required are there viz door closer etc (hettich/doorset etc) all company ready to use.	Sqm	32		

3	<p>Proving & fixing double skinned fixed partitions wall with doors or opening where ever required fabricated out of 65mmx 50mm champ wood frame as horizontal and vertical sections @ 450mmc/c duly coated with wood primer to be fixed with wooden plugs , fixing 12mm thick waterproved ply on both sides(duro/greenlam or equivalent make) of the partition , finally fixing 1.0mm thick laminate on both sides of the partition with adhesive of approved brand providing 1mm groove at all joints as per the drawing supplied and as per the instruction of the EIC . double skin partition to be raised upto height of 1300 mm from the floor and the rest of the height upto ceiling height to be enclosed with 6mm thick glass factory made dualy edge polished and finished with silicon filling and all required sheet patch fittings if or whenever require to hold or join each pannel the surrounded area around all glass panes to be 35mmx15 mm thick wooden section claded with 12mm ply and finally finished in matching 1mm thick laminate complete with all required teak beading as required and directed .</p>	Sqm	187		
4	<p>Providing & fixing 12mm thick factory made toughened glass of saint gobain make for fixed glass partition and / doors in all size and shapes with all required cuts and holes for stainless steel patch and low fitting spacers , duly edged and finished to use and complete in all aspects including filling the gap with silicon sealent for fixing patch fitting. steel [patch fittings locks , handles and floor machine etc .</p>	Sqm	78		
5	<p>Supplying & fixing door closer/fittings of sizes as given below as per direction of officer in charge</p>				
	a) Double cylinder floor spring (heavy duty-90kg)	Nos	25		
	b) Top patch fitting of Ozone/Dorma/Closma or equivalent make	Nos	25		
	c) Bottom patch fitting with strike plate of ozone /dorma/closma or equivalent/identical quality make.	Nos	25		
	d) Corner patch lock of ozone /dorma/closma or equivalent make.	Nos	25		
	e)H-type or D-type handle (25x300mm) of	Nos	25		

	safex/Closma or equivalent make				
6	Proving & fixing solar film frosted sparkle of Lummar/3m or equivalent make on toughned glass in approved design and pattern as per the drawing supplied or as per the instructions.	Sqm	70		
7	Proving and fixing in position teak venner ply paneling made out of frame work 47x47mm M.S. tubes 18 G thickness fixed at floor placed at 450/600mm max c/c vertical and horizontal supported from existing wall/floor with appropriate and necessary dash fastners to ensure stability . 50mm thick glass wool wrapped in tissue paper duly filled before ply panneling . the panneling consist of 12mm , commercial ply with 4mm thick teak veneer , a;ll teak wood sections / teak veneer to be melamine polished and all frame of MS work to be properly welded including 1 coat of primer and one coat of synthetic enamel paint . complete in all aspects as per detail drawing and as directed by the concerned official	Sqm	210		
8	Proving and fixing in position teak veneer ply paneling with appropriate and necessary dash fastners to ensure stability . The panneling consists of 12mm commercial ply with 4mm thick teak veneer , all teak wood section/ teak veneer to be melamine polished and all frame with 1 coat of primer and one coat of syntetic enamel paint complete in all aspects as per detail drawings and as directed by the concerned officials .	Sqm	100		
9	Proving and fixing in position wooden paneling on side walls and windows at lift lobby area using 12mm BWR ply 4mm thick veneer 1st quality and melamine polish.	Sqm	78		
10	Proving & fixing 5mm thick looking mirror of superior quality (Modigaurd/Atultuff/Saint Gobin make with 12mm thick commercial plywood in back of looking mirror and fixed to wooden cleats with CP brass screws & washers complete with 50 mm wide 2nd class teak wood ornamental beading all around the mirror including polishing 7 fixing with teak wood plugs etc complete as per the directions .	Sqm	10		

11	Painting & polishing :Proving and applying three or more coats of best quality plastic/velvet paint (royal) of approved manufacture and shade to wall surfaces etc applied evenly to give approved finish , including preparation of surface (Wall Putty - 2 coat or more) and coat of approved primer complete as per specifications to entire satisfaction of concerned officer for all levels & heights complete.	Sqm	1300		
12	Providing & pasting imported graphic designer wallpaper of 0.5mm thickness on existing walls including adhesive etc complete as per approved design by concerned officer.	Sqm	125		
13	External wall paint:Proving & applying 2 coat of Exterior weather coat with sealant and cement primer coat on external surface (apex)	Sqm	750		
14	Providing and fixing vitrified floor tiles and skirting (100 mm height) in general & dry areas shall be of vitrified 600 x 600mm of approved colour laid on a bed 20mm thick cement mortar 1:3 (1 cement :3 coarse sand) finished with a flush pointing in tile grout with matching pigment including preparation of surface , cleaning etc complete (kajaria make or equivalent make.)	Sqm	845		
15	Providing and fixing machine cut, mirror/eggshell polished , Marble stone work for Floor, wall lining (veneer work) including dado, skirting, risers of steps etc., in required design and pattern wherever required, stones of different finished surface texture, on 12 mm (average) thick cement mortar 1:3 (1 cement : 3 coarse sand) laid and jointed with white cement slurry @ 3.3 kg/sqm including pointing with All the joints should be filled with matching color epoxy admixed with pigment of matching shade, including rubbing, curing, diamond polishing etc. all complete as per Architectural drawings, and as directed. (a) 18 mm thick Italian Marble stone slab,Perlato, Rosso verona, Fire Red or Dark Emperadore etc. as per choice. All complete.	Sqm	100		
16	Providing and fixing flooring antiskid tiles of 07mm thick kajaria make or equivalent of approved colour & quality on over 1:3 cement mortar bed of 20mm thick.	Sqm	65		

17	Providing and fixing Glazed Ceramic tiles of 300x450mm or 300x300mm as available up to height of 2100mm in toilets shall be used for dado/ wall tiles, of approved color and make, fixed on the wall with the help of adequate adhesive, finishing, cleaning etc complete. joints to be finished with tile grout with matching pigment etc. complete	Sqm	100		
18	Providing and laying 20mm CPVC pipes with UV layer & Glass coating for external water supply & 16 mm polyethylene pack pipes for internal water supply with elbows, bends & T's limited to the building structure only.	Rmt	175		
19	Providing and laying 40mm CPVC pipes with UV layer & Glass coating for external water supply & 16 mm polyethylene pack pipes for internal water supply with elbows, bends & T's limited to the building structure only.	Rmt	75		
20	Providing & fixing automatic hand dryer of make Euronics/Aircare/or equivalent good quality make with speed up to 60m/s and minium 1200 wts power in stainless steel body, complete as per the directions of the officer/ officer in charge.	Nos	4		
21	Providing & fixing of manual type tissue paper dispensar of kimberley clark/Aircare or equivalent quality make in ABS body complete as per the directions of the officer/ officer incharge.	Nos	4		
22	Providing Fixing manual push type soap dispensar of kohler/kimberley clark/Aircare/or equivalent quality make with capacity of 1000ml in ABS body complete as per the directions of the officer or officer in charge	Nos	8		
23	Providing & fixing unplastic pvc triple layer overhead water storage tank of approved brand including the inlet and outlet provision etc. Make Syntex or equivalent.	Ltr	2500		
24	Providing & fixing wall hung type toilet with soft close seat and cover of size 560x365x355mm of kohler/ jaguar or equivalent make complete as per the direction of the officer in charge.	each	6		
25	Providing & Fixing white colour wash basin of kohler/jaguar or equivalent make over granite counter complete as per the diirection of officer in charge.	each	8		

26	Providing & fixing PVC concealed cistern with plate 8857 fitting & fixture of kohler/jaguar or equivalent make complete with all fitting etc, as per the direction of officer in charge.	each	6		
27	Providing & fixing hand shower (health faucet)with metal hose & holder in polish crome of kohler/jaguar or equivalent make complete as per the direction of officer incharge.	each	6		
28	Providing & fixing white vitreous wall hung urinal with concealed fitting of kohler/jaguar/Parryware/Hindware or equivalent make with back inlet and valve outlet including fixing to wall suitable brackets (set of 3 urinals with fittings) all as per manufacturer specifications and as per the direction of officer in charge. All Complete on turn key basis ready to use with fittings.	each	6		
29	Providing & fixing unplasticied PVC connection pipe with brass unions 60cm length and 15mm nominal bore. As per the direction of officer in charge.	each	25		
30	Providing & fixing anti cockroach floor trap grating of sizes etc complete as per the directions	each	12		
31	Providing & fixing CP bottle trap of kohler/Jaguar or equivalent make etc complete as per the direction of officer in charge.				
	(a) 32 mm nominal bore	each	8		
32	Providing & fixing CP single lever Lavatory Faucet or single hole single lever basin mixer with lever handle without drain of Kohler/Jaguar/Aircare or equivalent make complete as per the directions.				
	(a) 15mm Nominal bore.	each	10		
33	Providing & Fixing CP brass toilet paper holder with flap etc of kohler/jaguar/ aircare or equivalent make as per the direction of the officer in charge.	each	4		
34	Providing & fixing CP brass angular stop cork (angle valve) with flange for basin mixer/geyser point of kohler/jaguar or equivalent make as per the direction of the officer in charge.				
	(a) 15 mm nominal bore,IS 8931	each	45		
36	Providing and Fixing of SS Lazer Cut Jali of upto 3mm thickness as per design including of fixing. All Complete	Sqm	8		

37	Providing and Fixing Wall Paper (The waterproof/washable material was used)	Sqm	40		
38	Providing and Fixing special quality designer rubber flooring in thickness of maximum upto 22mm depending upon available level of adjacent flooring in GyM and Creche area wherever required as per the details and drawing issued	Sqm	125.78		
39	Providing and Fixing flamed granite stone fixed with adhesive over 12mm marine grade 100% water proof ply of Duro or equivalent	Sqm	10		
40	Providing and Fixing wall panelling on GyM wall using 12mm BWP ply as base duly fixed with screws and fastners, 4mm teak veneer fixed with adhesive and headless nails with grooves as per required design and finally edges fixed with teak lipping in required width at various locations.	Sqm	44.64		
41	Providing new Melamine Matt polish in required colour & shade over the above veneer panelling	Sqm	30		
42	Providing and Fixing designer Rope Partition at various locations in the GyM area as per the drawing and pictures issued, using teak wood frame all around, stainless steel customised books for holding the designer rope, providing and fixing the said designer Rope in required colour/shade and finally polishing the wood frame around	Sqm	10		
43	Providing & fixing 12mm thick MDF under wooden flooring to match the level of the rubber floor, including labour and material required.	Sqm	99.28		
44	Providing and Fixing 12mm thick toughened glass doors complete with holes, handles, floor spring, SS patch fittings.	Sqm	18		
45	Providing and Fixing 0.6mm thick aluminium sheets behind wooden cabinets & wall panelling for protection from seepage	Sqm	32.5		
46	Providing and Supplying new reception table in the GyM as per design and specification	Sqm	1		
47	Providing and Fixing 5mm thick extra clear mirror on gym walls as Glass panelling pasted with silicon on 12mm thick BWP play dule fixed with screws, complete including labour, ply, mirror and pasting fixing materials	Sqm	20		
	Sub Total (B)				
C	Temp Light Weighted Structure				

1	<p>Superstructure : Designing, fabricating, supplying & erection at site (Roof top level i.e.upto 20 metre height) of pre engineered / prefabricated light weight single storey without staircase steel structure as follows:</p>				
	The structure shall consist of works as under:-				
	<p>Structural Framework:- Fabrication and supply of the walls panels, roof trusses joists shall be all made up of roll-formed cold rolled lipped “C” steel sections of width 89mm or 150 mm made out sheet thickness ranging from 0.75mm to 1.20 mm with Zinc/Galvalume coating of 275GSM and steel yield strength of 550MPa i/c portal frame made of HR steel if required to accommodate large rooms including the base plate anchor bolts etc.</p> <p>Purlin:- GI hot section/ Galvalume “C” section Runner: Cold rolled lipped “C” steel sections shall be provided @ interval of 750 mm c/c for hanging of lights / false ceiling .</p> <p>Roofing:- Metal profile PPGL 0.5mm TCT in colours as approved</p> <p>Roof Insulation:- 16kg/m³, 100mm thk Fiber glass roof insulation</p> <p>External Wall Cladding:- 12mm thick Heavy duty Fiber cement boards of exterior grade Building Paper – Breather Foil on external face of LGSF wall. Internal wall cladding:- 12 mm thick Normal fiber cement boards upto bottom of truss/joist,However the clear height of bottom of truss/joist shall not be less than 3.0 mtr from floor level .</p> <p>Internal Wall Lining – 12.5mm thk Gypsum Plaster board with necessary fixing with necessary screws and finishing with jointing compound and jointing tape etc.</p> <p>Wall Insulation:- 100mm thick mineral wool 48kg/m³density. Suitable sun shades made out of 0.50 mm PPGL sheets will be provided to all external windows and doors not covered under verandah. The minimum projection for the sun shade shall be 450 mm and 300 mm wider than the width of the opening.</p> <p>Gutter and down take pipe:- Valley Gutter and down take pipe as per Architectural and as per actual requirements</p> <p>Finishing:- Ready to paint surface for interior & exterior including Jointing & a coat of cement primer</p>	Sqm	350		

	<p>Soffit and Eaves or equivalent Lining :- External Soffit and Eaves Lining with Fiber cement Boards.</p> <p>All civil work upto plinth level/Roof top level where the prefabricated structure to be erected shall be paid separately as per requirement & site conditions. The work shall be executed as per drawing enclosed.</p> <p>(The outside dimensions in plan of the light gauge metal frame shall be measured for working out the area payable under this item. However, cut-out/opening shall be deducted from the above measured areas. Nothing extra shall be paid for roof projections/ sunshades, or height.)</p> <p>(Note: Split up of components of this item is not permitted, all relevant works/items shall be of specialized LGSF original manufacturer preferably make Everest or equivalent and executed through OEM)</p> <p>The above work include removal / shifting of all services existing on the relevant area as per the instruction of officer - in -charge,</p>				
2	<p>CIVIL WORK: Excavation of Base Work on terrace & back filling of available excavated area with demolition of any RCC/Brick wall.</p>	Sqm	400		
	<p>Providing RCC Plinth beam of 150 x 230mm with nominal reinforcement of 8mm TMT bars & M20 concrete for fixing of LGSF wall by means of anchor fastener.</p>	Cum	11		
	<p>Providing & laying in position cement concrete in floor 1:3:6 (1 Cement: 3 Corase Sand : 6 Graded Stone Aggregate 20mm Nominal size) 75mm thick. With Water Proofing</p>	Cum	12		
	<p>Plinth beam edge Protection of average 50mm thick 1:5:10 and 300mm in width (Sloping from 3 inches to 1 inch)</p>	Cum	8		
3	<p>Flooring (Dry Area): Floor tiles and skirting (100 mm height) in general & dry areas shall be of Vitrified Tiles 800x800mm of approved color laid on a bed of 20mm thick cement mortar 1:3 (1Cement:3 Coarse sand) finished with a flush pointing in tile grout with matching pigment including preparation of surface, cleaning etc complete. (Base Price - Rs. 100/Sqft) (Kajaria/Somany/Nitco or equivalent make)</p>	Sqm	450		

4	Flooring (Wet Area): Toilet area - Minimum 7 mm thick antiskid tiles of Kajaria/Somany/NITCO/ make approved equivalent of approved colour & quality.	Sqm	50		
5	Wall Tiling (Toilet Area): Glazed Ceramic Tiles of 300x450mm or 300x300mm as available up to height of 2100mm in toilets shall be used for Dado/ wall tiles, of approved color and Kajaria make, fixed on the wall with the help of adequate adhesive, finishing, cleaning etc complete. Joints to be finished with tile grout with matching pigment etc. Complete	Sqm	150		
6	Water Proofing (Toilet wall area): Water proofing with plastomeric modified APP polymer membrane reinforced with non woven fibre in Toilet areas upto 7ft height.	Sqm	200		
7	Internal Wall Paint : Providing & applying 2 coat of Plastic Emulsion paint including a coat of primer (Asian Royale or equivalent).	Sqm	1350		
8	External Wall Paint : Providing & applying 2 coat of Exterior weather coat with sealant and cement primer coat on external surface of fiber cement boards. (Asian Apex Ultima)	Sqm	750		

9	<p>False Ceiling : Providing and fixing tiled false ceiling of approved materials of size 595x595 mm in true horizontal level, suspended on inter locking metal grid of hot dipped galvanized steel sections (galvanized @ 120 grams/ sqm, both side inclusive) consisting of main "T" runner with suitably spaced joints to get required length and of size 24x38 mm made from 0.30 mm thick (minimum) sheet, spaced at 1200 mm center to center and cross "T" of size 24x25 mm made of 0.30 mm thick (minimum) sheet,1200 mm long spaced between main "T" at 600 mm center to center to form a grid of 1200x600 mm and secondary cross "T" of length 600 mm and size 24x25 mm made of 0.30 mm thick (minimum) sheet to be interlocked at middle of the 1200x600 mm panel to form grids of 600x600 mm and wall angle of size 24x24x0.3mm and laying false ceiling tiles of approved texture in the grid including, required cutting/making, opening for services like diffusers, grills, light fittings, fixtures, smoke detectors etc. Main "T" runners to be suspended from ceiling using GI slotted cleats of size 27 x 37 x 25 x 1.6 mm fixed to ceiling with 12.5 mm dia and 50 mm long dash fasteners, 4mm GI adjustable rods with galvanized butterfly level clips of size 85 x 30 x 0.8 mm spaced at 1200 mm center to center along main T, bottom exposed width of 24 mm of all T-sections shall be pre-painted with polyester paint, all complete for all heights as per specifications, drawings and as directed by officer-in-charge. GI Metal Ceiling Lay in plain Tegular edge Global white color tiles of size 595x595 mm, and 0.5 mm thick with 8 mm drop; made of GI sheet having galvanizing of 100 gms/sqm (both sides inclusive) and electro statically polyester powder coated of thickness 60 microns (minimum), including factory painted after bending.</p>	Sqm	290		
10	Doors:				
	Doors: Flush doors with veneer/laminate on both sides.	Sqm	21		

11	Windows: Sliding/fixed/casement window shall be provided with all fitments. The window frame and window shutter will be manufactured using suitable UPVC sections. The window shutter shall be provided with glazing of 08mm thk plain glass (double glass with gap between them of approx 50mm) fixed using rubber gasket.	Sqm	20		
12	Electricals (Temp Structure): Providing electrical work comprising of PVC Conducing, Point wiring (Havells FRLS or equivalent), Modular Switches, Sockets with boxes & respective cover plate (Havells make or equivalent) (All other fittings & fixtures in concerned officials' scope)	Sqm	350		
	Sub Total (C)				
D	FURNITURE, FIXTURES, INTERIOR PANNELLING & MISCELLANEOUS				
1	Supply and placing in position centre table of the specification /size 1000mmx600mmx428mm with top panel thickness of 10mm thick toughned glass. The frame work/under structure of the table shall be of wooden frame. Glass top & bottom shelves shall be metal 1.2mm sheet cut froler design fixed with understructure complete as per manufacturer's specification and as per direction of officer.	Nos	2		
2	Supply and placing in position main officer desk/table of the specification of size 2100mm (w) x 900mm (d)x 750mm (h).The table top shall be 25mm thick MFC (Melamine Faced Chipboard). The main table should be of duck noise profile edge in order to enhance the work space aesthatics. The material shall be as per manufacturer's specification and as per the direction of officer.	Nos	1		
3	Supply and placing in position joining table of the specification /size 1200mm (w)x 600mm (d) x 750mm (h) with top panel thickness of 25mm using Melamine Faced Chipboard (MFC). The leg of joining table shall be as per manufacturer's specification and as per the direction of officer.	Nos	4		

4	Providing and fixing file/storage cabinets in sizes as per design or site requirement made up of BWP block board (of different thickness as/design) finished in machine pressed laminate (colour / texture to be as decided by EIC / matching to the adjoining workstations/ wood work. A variation of upto 50mm in either dimension shall be tolerable for getting the desired product in mentioned makes. The inside to be finished in 1mm thick laminate or matching to the exteriors. A-class teak wood 4mm lipping/2mm thick taping shall be used as lipping etc. where ever required, to be polished to match same shade as laminate. Cabinets to be made as per drawing provided with all fittings and fixtures such as telescopic channels, hinges, magnetic catchers (Hettich make) and handles (S.S brushed finish), proper locking mechanism, pad lock with steel/nickel finish, of Godrej/Doorset/Harrison or equivalent make etc. all complete. The cabinet shall be mounted either on floor or wall using 6-12mm waterproof ply (Duro or equivalent) as backing with wooden anchors (Gitti) placed @ 300mm C/C on wall. The item shall include making good any holes, wire managers + fixing on wall whatever required.				
	a) Having depth of up to 350mm	Sqm	20		
	b) Having depth of up to 450mm	Sqm	10		
	c) Having depth of up to 600mm including modular stainless steel basket & fitting suitable for below counter kitchen/pantry cabinets for pantry.	Sqm	42		
5	Providing & supplying magazine & newspaper racks for the office use, in size 36" height and 12" width made out of 19mm BWP ply fixed with 4mm thick veneer and 1mm thick laminate as per design, duly polished at all edges with teak wood margin having shelves and or pockets as per the size of magazines or publications the stand should be free standing without being mounted on any walls with provision of stand or legs as per design.	each	1		

6	<p>Supply of premium chair for computer tables with overall dimension(w) 49cm (d) 63cm (h) 81.5cm and seat height (SH) 44-56cm (adjustable). The seat/back shall be made up of 1.2cm thick hot pressed plywood upholstered with poly viscose fabric (67% polyster + 33% Viscose), (colour and texture as decided) or polyester bearing the weight of 330gm/m for a span of 1.2 meter. The seat and back shall be made out of molded polyurethane foamwith PVC lipping all round. The seat (size- 49cm (w) x 44cm (d)) should have a waterfall edge and back (Size- 50cm (w) x 49cm (h)) foam shall be made of black integral skin polyurethane with 50-70 "A" hardness and reinfrced with MS insert. The armrests shall be scratch and weather resistant. The armrests shall be fitted to the seat with seat/armrests connectiong strip assembly made of 0.5cm thick HR Steel. The center pivot mechanism shall be designed with features 3600 revolving type. 17" maximum tilt on pivot at center. tilt tension adjustment telescopic type and injection molded in black polypropylene. The base shall be in chrome (glossy) finish and fitted with 5 nos twin wheel castors. (castor wheel dia 5.0cm). The pedestal shall be of 65cm pitch center dia (75.0cm with castors) The twin wheel castors should be injection molded in black nylon for trouble free movement. To be placed on 3rd & 4th floor at newly created office area.</p>	each	50		
7	<p>Supply of premium chair for officer's sitting with overall dimension(w) 600mm (d) 550mm (h) 1200mm and seat height (SH) 550-750mm (adjustable). The seat/back shall be made up of 1.2cm thick hot pressed plywood upholstered with poly viscose fabric (67% polyster + 33% Viscose), (colour and texture as decided) or polyester bearing the weight of 330gm/m for a span of 1.2 meter. The seat and back shall be made out of molded polyurethane foamwith PVC lipping all round. The seat (size- 49cm (w) x 44cm (d)) should have a waterfall edge and back (Size- 50cm (w) x 49cm (h)) foam shall be made of black integral skin polyurethane with 50-70 "A" hardness and reinfrced with MS insert. The armrests shall be scratch and</p>	each	18		

	<p>weather resistant. The armrests shall be fitted to the seat with seat/armrests connectiong strip assembly made of 0.5cm thick HR Steel. The center pivot mechanism shall be designed with features 3600 revolving type. 17" maximum tilt on pivot at center. tilt tension adjustment telescopic type and injection molded in black polypropylene. The base shall be in chrome (glossy) finish and fitted with 5 nos twin wheel castors. (castor wheel dia 5.0cm). The pedestal shall be of 65cm pitch center dia (75.0cm with castors) The twin wheel castors should be injection molded in black nylon for trouble free movement.</p>				
8	<p>Supply of premium chair for visitor's sitting with overall dimension(w) 550mm (d) 500cm (h) 950mm and seat height (SH) 450-600cm (adjustable). The seat/back shall be made up of 1.2cm thick hot pressed plywood upholstered with poly viscose fabric (67% polyster + 33% Viscose), (colour and texture as decided) or polyester bearing the weight of 330gm/m for a span of 1.2 meter. The seat and back shall be made out of molded polyurethane foamwith PVC lipping all round. The seat (size- 49cm (w) x 44cm (d)) should have a waterfall edge and back (Size- 50cm (w) x 49cm (h)) foam shall be made of black integral skin polyurethane with 50-70 "A" hardness and reinfrced with MS insert. The armrests shall be scratch and weather resistant. The armrests shall be fitted to the seat with seat/armrests connectiong strip assembly made of 0.5cm thick HR Steel. The center pivot mechanism shall be designed with features 3600 revolving type. 17" maximum tilt on pivot at center. tilt tension adjustment telescopic type and injection molded in black polypropylene. The base shall be in chrome (glossy) finish and fitted with 5 nos twin wheel castors. (castor wheel dia 5.0cm). The pedestal shall be of 65cm pitch center dia (75.0cm with castors) The twin wheel castors should be injection molded in black nylon for trouble free movement.</p>	each	25		

9	<u>Specifications for lounge sofa sets:</u> Supplying one, two and three seated sofa sets of specified size and dimension . Seat rest,Back rest and Side arms assembly consists of a fabricated inner frame assembly with moulded polyurethane foam having density = 45 ± 2 Kg./cm which provides strength as well as comfort to the sofa. The complete moulded backrest assembly is covered with a replaceable fabric upholstery cover. Three seated sofa shall have overall size of 1800L x 740 D x 740 H mm Two seated sofa shall have overall size of 1300L x 740 D x 740 H mm One seated sofa shall have overall size of 600L x 740 D x 740 H mm. All material should be used of relevant ISI specification and as approved by the concerned officials.				
	single seater sofa	each	2		
	2-seater sofa for reception area(w) 93cm (l) 250cm (h)45 cm	each	3		
	3-seater sofa for reception area(w) 93cm (l) 250cm (h)45 cm	each	2		
10	<u>Specifications for centre table :</u> The centre table should be of premium quality. It should be 0.95 cm thick float glass with high Quality teak wood framing / MS ERU high quality chrome plated framing. Material should be used of relevant ISI specification and as approved by the concerned officer. Approx. Size shall be 1200mm(W)x1200mm(D)x425mm(H)(min). NOTE: The side table & centretable should be from the same model/alike.	Nos	1		
11	<u>Specifications for side table</u> The centre table should be of premium quality. It should be 0.95 cm thick float glass with high Quality teak wood framing / MS ERU high quality chrome plated framing. Material should be used of relevant ISI specification and as approved by the concerned officer. Approx. Size shall be - 550mm (W)x 550mm(D)x 425 mm (H) (min) NOTE: The side table ¢retable should be from the same model/alike.	Nos	6		

12	<p>Conference table :-Providing and fixing CONFERENCE ROOM Table with the following specifications:- The table is to be supplied in completely knock down conditions for assembly at site. The construction of the main table shall be free standing structure constructed with the help of mini-fix dowels and pins. The table should be made up of min 32mm thick MDF board with balancing laminate. Top is finished with 1.0mm thick Merion or Egeivalent Laminate. The table should have soft edge .The foil shall be coated with PU layer for better scratch and wear resistance. MDF Board shall be of Interior Grade as per IS 12406 : 2003 The table connections have to be made in such a way that no gaps should be seen in between the tables. The provision of Wire carrier shall be as per manufacturer specifications. Table shall be made in following configuration:-</p>				
	1) Conference Table 8 Seater (3200 mm x 1500 mm)	Nos	1		
13	<p>Providing and Supplying of ergonomically designed fabric upholstered high back revolving chair for Conference Room. The Seat and Back Cushion of the chairs should be pressed on 12mm hot press moulded ply. The seat cushion of the chair should be made up of 50mm thick High Density of 45±2 Kg/m³ polyurethane mould and back cushion should be made up of 38mm thick High Density 33±2 Kg/m³. The polyurethane foam shall be as per manufacturer's specification. The hardness of foam shall be 20 kg on hampden machine and 25% compression and it should be covered with fabric as per manufacturer's shade card. (Fabric colour shall be approved by concern official) The arms of the chairs should be black as per manufacturer specification. The Gas lift mechanism should be tested as per BIFMA X 05.01.2002 Standards. The tilting mechanism should be synchro-tilt mechanism as per international ergonomics standards any position locking. The pedestal should be five legged injection moulded in black 30% glass -filled nylon and fitted with 5 nos twin wheel castors. The castors of the chairs should be glass filled, twin wheel castors confirming to BIFMA Standards X 05.01.2002 tested to</p>	Nos	12		

	perform 1,00,000 cycles with 225 lbs Load. NOTE:The back and base of chair should be supplied with black polypropylene moulded covers. (Fabric colour shall be approved by concern official)Overall Height of chair should be minimum 1225 mm (Inclusive of maximum adjustment of gas lift mechanism) All material should be used of relevant ISI specification and as approved by the concerned officer.				
14	Specifications for fixed base cushion chair for conference room : The back chairs for the conference rooms and meeting rooms shall be low back chair. The arms of the chairs should be black . The chair shall be supplied with PU moulded seat and back .The under structure should be made of tubular cantilever type MS ERW tube black powder coated. The chair shall be supplied with fabric of approved make and shade for seat and back. Note -The back and base of the chair should be supplied with fabric upholstered. All material should be used of relevant ISI specification The dimensions of the chairs should be as follows: Overall Height of chair : 890 mm max. The chair should be preferably the same model/alike as that of conference room chair.	Nos	12		
15	Providing and Fixing back painted Toughened Glass on wall for writing board, name board etc; as per details below and as per the detailed working drawing :- (i) toughened glass for using as writing board - 04 Nos (ii) toughened glass based sign board for display of Names and tenure etc. using sticker based material as per specified nomenclature - 04 Nos (iii) sign board using 19mm BWR Board & veneer with polish covered with toughned glass of same size using stickers/film pasted using stainless steel spacers as approved - 02 Nos	sqm	6		
16	Providing and fixing Acoustic Panel of 9mm thickness in appropriate complete fixing on existing surface and with approved color as per design and drawing	sqm	40		

17	<p>Supplying and installation of modular computer work unit of minimum dimension 1500mm (W) x 600mm (D) x 760mm (H) with side table unit approx size 1000x600mmx760mm a 50mm thick panel oneither sides of total ht 1500mm.A variation of + -300mm either side shall be tolerable as/availability of product in mentioned makes. The work station shall be made up of 19mm BWP block board (in different thicknesses as per requirement of the design) finished in machine pressed 1.0mm laminate color as decided by the client. The side and rear, 1500mm high partition panel of 50mm width, made up of multiple layers of 12mm / 19mm block board with outer finished paneling of laminate and tackable fabric as per the drawing provided. This partition member shall have in it a hollow space to run the Data and power cables, + space for recessed switch plate as per drawing provided, the said partition panels to have partly toughened glass verticals as design elements. The tack-able fabric shall be mounted on 12mm soft board including a set of trays with it. The color and texture of laminate, fabric etc. shall be a combination (asper the design or choice of the office in charge) as decided by buyer. The unit shall have a cabinets / drawers unit as per drawing provided. The drawers shall be supported on telescopic runners of hettich / ozone equivalent make. The lower portion shall have hinged shutter doors as per drawing, with spring loaded self closing hinges of hettich or equivalent make. All the drawers, cabinets shall have a tumbler locking mechanism classic furniture pad lock with steel/ nickel finish, of godrej / doorset / harison or equivalent make. All the handles shall be S.S brushed finish and to be as per approval by buyer/ client . The flat exposed edges shall be sealed with 4mm thick teak wood lipping duly duco painted in matching colour to the laminate around. The unit shall be complete in all respect including making space & provisions for electrical agency for laying of wiring (telephone, power, data and voice) in provided raceways and provisions for fixing of switch</p>	nos.	32		
----	--	------	----	--	--

	plates, switches, sockets etc. The complete unit shall be having wire managers, required accessories etc. to be installed as directed.				
	Note : The dimensions of the work station will be refer as per the drawing details provided in the layout.				
18	Providing and fixing Executive Work Station with approx height 750-780mm of and giving main work station approx size 2250 x 750mm with side table unit approx size 1200x450mm with ample storage provisions as per drawing & design, the entire unit to be in 19mm thick BWP block board pasted with 1.0mm thick designer laminate, all edges to be sealed with teak wood margin duly duco painted matching to the colour& finish of the adjoining laminate, the side enclosing partition to be in 50mm thickness clayed with 1.0mm thick designer laminate, all cable & wire managers to be provided along with required electrical points, switches & sockets, computer jacks & punches, etc. All required hardware with locks & handles and channels to be used, complete in all respects and ready to use Complete with Oaken Glow (officer cabins) (approx 32 sqm) and View Max Screen (approx 20 sqm) etc as required	nos.	15		
19	Providing & supplying modular folding food serving imported designer light weight trolley in wooden finish shelves, MS Round pipe powder coated frame and wire baskets complete on wheels as per drawing.	each	0		
20	Providing & supplying fridge (300 ltrs) for storing minor soft drinks, juices or water bottles for placing inside wooden pantry cabinet.	each	2		
21	Providing wood work (Second class teak wood) in frames of doors, windows and other frames and fixed in position with hold fast lugs or with dash fasteners of required dia & length.	CUM	9.25		
22	Malamine polish with finish in gloss/matt of required shade over wooden surface including preparation of surface complete.	SQM	100.00		
23	Providing & fixing 9mm th. Accoustic panels as per design & pattern on 12mm th. Wooden plyboard fixed on 50mm x 50mm hardwood frame.	SQM	100.00		

24	Providing & installation of 6mm th. Loop pile carpet on steps	Sqm	150.00		
25	Supply,Installation ,testing & Commissioning (SITC) of up to 300mm plastic body fresh air fan in the existing opening i/c making the hole to suit the size of above fan making good th edamages connections testing commissioning etc as required.	each	2		
26	Double side 12mmPly on wooden frame partition	Sqm	150		
27	Single side 12mm ply on wooden frame partiton	Sqm	80		
28	Providing & Fixing 4mm Veneer on existing ply Partition with Melamine Polish	Sqm	60		
29	Providing & fixing 12mm ply panelling on side walls without frame with top finishing of 1mm laminate	Sqm	60		
30	Sink for Pantry	No.s	2		
31	Black enamel paint on MS angles and flats	Sqm	325		
32	Panelling with 12mm ply on walls finished with laquer glass	Sqm	200		
33	Providing and installation of Latherite panelling over 12mm ply base	Sqm	150		
34	3D Panelling over 12mm ply base on wooden frame with cove	Sqm	100		
35	Providing and fixing tiled carpets in conference hall	Sqm	21		
	Sub Total (D)				
E	DETAILS OF AUDIO VISUAL EQUIPMENT/ITEMS				
	DISPLAY ITEMS				
1	HD LED 65" Displays with wall mount (samsung or equivalent commercial model) with installation including stand and allied any other item. All Complete	DM75 E	1		
2	HD LED 55" Displays with swivel wall mount (Panasonic or equivalent make commercial model) with installation including stand and allied any item. All Complete	DC55 E	2		
	Sub Total (E)				
F	Fire Alarm System				
1	Supplying and fixing of following sizes of steel conduit along with accessories in surface/recess including painting in case of surface conduit or cutting the wall and making good the same in case of recessed conduit as required.				
(a)	20 mm	mtr	250		
(b)	25 mm	mtr	120		

2	Supplying and drawing following size of FRLS PVC insulated copper conductor,Single core cable in the existing surface/recessed steel/PVC conduit as required.				
(a)	2x1.5 sq.mm	mtr	470		
3	Supplying ,installation ,testing and commssioning of nalog addressable fire alarm control panel (FACP) with battery charger and battery backup for 8 hours normal operations and one hour alarm operations. The FACP shall include a full featured operator interface control and annunciation panel that shall include a backlit 640 character liquid crystal display, and a QWERTY Style alphanumeric keypad for the for the fire alarm system. The panel should be equipped with sufficient numbers of loop shall have a capacity of minimum 159 detectors and 159 modules in one loop. The panelshall be UL listed and FM approved and comply UL 864, 9th Edition requirement. The enclosure shall be UL listed. The quoted rate shall include include supply of necessary software and hardware for programming the panel with all necessary license.	Nos	2		
4	Supply,Installation,testing & commissioning of analogue addressable photo electric type smoke detector with mounting base, address switch complete as required.	Nos	60		
5	Addressable Hooter (sound output of Minimum 90db) cum strobe (strength of light 10cd) with control module complete as required.	Nos	4		
6	Supply,fixing,testing and commissioning of flush type response indicator with red coloured neon lamp	Nos	10		
7	Supplying,fixing testing and commissioning of addressable Manual call point complete with address switch (Not break glass units)	Nos	10		
	Sub Total (F)				
G	VRF AIRCONDITIONING SYSTEM				
S.No.	Description	Units	Qty		
1	Installation of Variable Refridgerant Flow System				
	Supply of 24 HP Heat Pump type -top Discharge - 100% INVERTER	Nos	4		
2	INDOOR UNIT				
	Supply of Indoor units address setting and				

	capacity as				
	4 way cassette with wired/corded remote				
(a)	1.59 TR/2.0 HP	Nos	6		
(b)	2.0 TR/2.5 HP	Nos	6		
(c)	2.65 TR/3.0 HP	Nos	6		
(d)	3.2 TR/4.0 HP	Nos	8		
3	Hi Wall Units				
	1.5 HP	Nos	6		
	2.0 HP	Nos	5		
4	Y-Joints	Nos	45		
5	Split 100% Cool only wall mounted Air conditioners make mitsubishi				
(a)	1.8TR	Nos	01		
(b)	1.5 TR	Nos	01		
(c)	1.0 TR	Nos	01		
	Airconditioning Systems requirements for Installations				
6	Installation Modular type set free outdoor units equipped with highly efficient scroll compressors.				
7	Installation,Testing and commissioning outdoor unit				
	24 hp	Nos	4		
	INDOOR UNITS				
	Installation,testing and commissioning of SETFREE INDOOR Units ,address setting and capacity as mentioned below				
8	Cassette Units				
(a)	1.59 TR/2.0 HP	Nos	6		
(b)	2.0 TR/2.5 HP	Nos	6		
(c)	2.65 TR/3.0 HP	Nos	6		
(d)	3.0 TR/4.0 HP	Nos	8		
9	Hi Wall Units				
(a)	Wall Mounted Split Type :1.5 HP	Nos	6		
(b)	Wall Mounted Split Type 2.0 HP	Nos	5		
(c)	Corded Remote	Nos	37		
(d)	MS stand for outdoor unit mounting	Nos	4		
10	Refridgerant Piping,Drain Piping and cabling				
	Spply Installation testing and commissioning of interconnecting refrigerant pipe work with (19mm/13 mm thick)				
(a)	41.3 (with 19 mm insulation)	RMT	70		
(b)	34.9 (With 19 mm insulation)	RMT	90		
(c)	28.6 (With 19 mm insulation)	RMT	75		
(d)	22.2 (With 19 mm insulation)	RMT	85		
(e)	19.1 (With 19 mm insulation)	RMT	65		

(f)	15.9 (With 19 mm insulation)	RMT	130		
(g)	12.7 (With 19 mm insulation)	RMT	75		
(h)	9.5 (With 19 mm insulation)	RMT	125		
(i)	6.4 (With 19 mm insulation)	RMT	75		
	Cable Tray				
11	Providing and fixing of GI cable tray with properly support complete with GI threaded				
(a)	Cable tray for copper piping (300 mm)	RMT	55		
(b)	Cable tray for copper piping (150mm)	RMT	35		
12	Supply,Installation,testing & commissioning of Refnet Joints	Nos	40		
13	Providing and fixing rigid PVC piping complete with fittings,supports as per HITACHI standards				
(a)	32 mm dia	RMT	96		
(b)	40 mm dia	RMT	55		
106	Supply & Fixing of control cum transmission wiring of copper conductor cable				
(a)	2 C X .75 Sq mm	RMT	450		
14	Cassette Frames -Welding	Nos	16		
15	Supply, installation, Testing and Commissioning of FIVE star rating split type AC unit of 2.0 TR capacity working on 230 volts AC supply with OUTDOOR Unit stand copper piping upto 4 metre i.e. fixing of drain pipe making electrical connection complete etc as required (MAKE HITACHI/O GENERAL/MITSUBISHI/TOSHIBA)	Each	4		
16	Supply, installation, Testing and Commissioning of FIVE star rating split type AC unit of 1.5 TR capacity working on 230 volts AC supply with OUTDOOR Unit stand copper piping upto 4 metre i.e. fixing of drain pipe making electrical connection complete etc as required (MAKE HITACHI/O GENERAL/MITSUBISHI/TOSHIBA)	Each	4		
17	Supplying, Installation, Testing and Commissioning of Wall Mount Type 5KVA Voltage Stabilizer with input of 160-300 Volt and Output of 200- 240 Volts with under voltage and high voltage cutt-off and with TDR etc. complete as reqd.	Each	8		
18	Supply, Installation, Testing and Commissioning of additional referigerent copper piping of required size alongwith insulation, wiring and drain piping, complete etc. as required.	Meter	500		
19	Supply & installationof indoor CCTV camera with 2.0 MP HD incl. SMPS, BNC connector	No.s	16.00		

	Sub Total (G)				
H	Electricals				
1	Wiring for Light point/ Fan point/ exhaust fan point/call bell point with 1.5 sq. mm FRSL PVC insulated copper conductor single core cable in surface/recessed PVC conduit, with modular switch, modular plate, suitable GI box and earthing the point with 1.5 sq. mm. FRLS PVC insulated copper conductor single core cable etc as required. a) Group C	Point	150		
2	Wiring for twin control light point with 1.5 sq mm FRSL PVC insulated copper conductor single core cable in surface/recessed steel conduit, 2 way modular switch, modular plate. Suitable GI box and earthing the point with 1.5sq mm. FRSL PVC insulated copper conductor single core cable etc as required.	Point	5		
3	Wiring for group controlled (looped) light point/fan point/exhaust fan point/call bell point (without independent switch etc) with 1.5 sq mm FRLS PVC insulated copper conductor single core cable in surface/recessed steel conduit, and earthing the point with 1.5 sq mm FRLS PVC insulated copper conductor single core cable etc as required	point	350		
4	Wiring for circuit/submain wiring alongwith earth wire with the following sizes of FRLS PVC insulated copper conductor, single core cable in surface/recessed Steel conduit as required a) 2x2.5 sqm mm + 1x1.5 sq mm earth wire	Meter	650		
5	Wiring for circuit/ submain wiring along earth wire with the following size of FRLS PVC insulated copper conductor, single core cable in surface/ recessed medium class PVC conduct as required a) 4 X 2.5 sq. mm + 1 X 2.5 sq. earth wire.	Meter	100		
6	Supplying and fixing of following fixed for medium class PVC conduit along with accessories in surface/recess including cutting the wall and making good the same in case of recessed conduit as required . 20 mm dia.	Meter	100		
7	Supplying and fixing of following sized for medium class PVC conduit along with accessories in surface/recess including cutting	Meter	210		

	the wall and making good the same in case of recessed conduit as required . 25 mm dia.				
8	Supplying and fixing suitable size GI box with modular plate and cover in front on surface or in recess, including providing and fixing 3 pin 5/6 amps modular socket outlet and 5/6 amps modular switch, connection etc. as required. (For light plugs to be used in non residential buildings.	Each	75		
9	Supplying and fixing suitable size GI box with modular plate and cover in front on surface or in recess, including providing and fixing 6 pin 15/16 amps modular socket outlet and 15/16 amps modular switch, connection etc. as required.	Each	60		
10	Wiring for light/power plug with 2x4 sq mm FRLS PVC insulated copper conductor single core cable in surface/recessed Steel conduit alongwith 1 No.4 sq mm FRLS PVC insulated copper conductor single core cable for loop earthing as required	Meter	160		
11	Wiring for light / power plug with 2X4 sq.mm FRLS PVC insulated copper conductor single core cable in surface. Recessed medium class PVC conduit along with 2 No 4 sq. mm FRLS PVC insulated copper conductor single core cable for loop earthing as required.	Meter	25		
12	Wiring for light/power plug with 4x4 sq mm FRLS PVC insulated copper conductor single core cable in surface/recessed Steel conduit alongwith 2 No.4 sq mm FRLS PVC insulated copper conductor single core cable for loop earthing as required	Meter	65		
13	Wiring for light / power plug with 4X4 sq.mm FRLS PVC insulated copper conductor single core cable in surface. Recessed medium class PVC conduit along with 1 No 4 sq. mm FRLS PVC insulated copper conductor single core cable for loop earthing as required.	Meter	75		
14	Wiring for circuit/submain wiring alongwith earth wire with the following sizes of FRLS PVC insulated copper conductor, single core cable in surface/recessed steel conduit as required 2x6 sqmm + 1x6 sqmm earth wire	Meter	100		

15	Wiring for circuit/submain wiring alongwith earth wire with the following sizes of FRLS PVC insulated copper conductor, single core cable in surface/recessed medium class PVC conduit as required 4X6 sq.mm + 2X6 sq mm earth wire	Meter	25		
16	Supplying & fixing of modular blanking plate on the existing modular plate & switch box excluding modular plate etc. as required.	Each	100		
17	Supplying and fixing suitable size GI box with modular plate and cover in front on surface of in recess including providing and fixing 25 A modular socket outlet and 25 A modular SP MCB, "C" curve including connections, painting etc. as required.	Each	22		
18	Supply, Installation, testing and commissioning of pre-wired, flurocent fitting/compact florescent fitting of all types, with all accessories and tube etc. directly on ceiling/wall, including connection with 1.5 sq.mm FR PVC insulated, copper conductor, single core cable and earthingetc. as required.	Nos.	50		
19	Installation, testing and commissioning of ceiling fan, including wiring the down fods of standard length (upto 30 cm) with 1.5 sqmm FRLS PVC insulated, copper conductor , single core cable etc as required.	Nos.	12		
20	Installation of exhaust fan in the existing fan in the existing opening, including making good the damage, connection, testing, commissioning etc. as required upto 450 mm sweep.	Nos.	2		
21	Suppling and fixing two module stepped type electronic fan regulator on the ecisting modular plate switch box including connections but excluding modular plate etc. as required.	Nos.	12		
22	Supply of LED better suitable for conduit/surface/suspended mounting, a stand alone fixture with power consumption of maximum 41W producing lumen output of 4000 lumens or more having an integral driver with THD<10% and PF>0.9 excellent efficiency of 90 lm.W and 50000 hrs of life at L70 i.e. the lumen output of fiture reduces to 70% of its original output after 50000 hrs. Complete with all accessories etc. as reqd Make : OSRAM - Simplitz BTN ACH1200A, Philips BN 208C LED 40/CDL	Nos.	25		

	L1200 FR, Trilux RIDOS OT LED 4000-840 ET, Thron Propack LED 4500-840 HF.				
23	Supply of recessed LED light fixture of size not less than 590x 590x77 mm having minimum lumen output of 3300 lumens & maximum 43 watt, driver efficiency more than 80% , pf- more than 0.9 shall have elegant, crack powder coated housing body with high transitivity opal diffuser cover etc. The fixture shall have in built protection against over voltage, short circuit, over load and miss-wiring with high efficiency and low power- loss. The fixture shall be suitable for WHITE LIGHT (5700 - 6500k), CRI >80, color light. The fixture, complete with its driver etc as required. make philips - RC365BLED33 -5000PSU ODYH, OSRAM LUX POWER F, GE -GCR043 - 56NO(42W), Zumtobel - MELLOW Light V LED (39W)	Nos.	50		
24	Supply of Surface mounted LED downlighter, the power consumption of fixture is 15 -18 W and producing a lumen output of 1100 lumen. The fixture has Mid Power LED'S integrated with an efficient optical system to provide high DLOR. Construction of fixture is High Efficiency White Reflector along with High Transitive in Diffuser and CRI > 70 Complete with all accessories etc. as reqd. Make : OSRAM/ PHILIPS/GE/ ZUMTOBEL.	Nos.	80		
25	Supply of recess mounted LED downlighter, the power consumption of fixture is upto 15 W and producing a lumen output of upto 1100 lumen. The fixture has Mid Power LED'S integrated with an efficient optical system to provide high DLOR. Construction of fixture is High Efficiency White Reflector along with High Transitive in Diffuser and CRI > 70 Complete with all accessories etc. as reqd. Make : OSRAM/PHILIPS/GE/ZUMTOBEL.	Nos.	45		
26	Supply , Installation , Testing and Commissioning of LED street light wattage of 40-45 W IP66 with minimum system lumen output of 3400 lumenx, CCT> 5500k, CRI >70 and efficacy of minimum 85 lumen/ watt having pressure diecast aluminium alloy housing, life of LED's should be 50,000 burnings hrs. Surge protection upto 4kV with heat resistant toughened glass/polycarbonate complete with all accessories etc as required.	Nos.	6		

27	Supply of upto 450mm sweep heavy duty exhaust fan complet with louvers etc.	Nos	2		
28	Supplying and fixing following way, single pole and neutral, sheet steel, MCB distribution board, 240 volts, on surface/recess, complete with tined copper bus bar, neutral bus bar, earth bar, din bar, interconnections, powder painted including earthing etc. as required (But without MCB/RCCB/Isolator) a) 12 Way, Double Door	Each	2		
29	Supplying and fixing following way, single pole and neutral, sheet steel, MCB distribution board, 415 volts, on surface/recess, complete with tined copper bus bar, neutral bus bar, earth bar, din bar, interconnections, powder painted including earthing etc as required (But without MCB/RCCB/Isolator) a) 8 Way (4+24), Double door	Each	4		
30	Supplying and Fixing following rating, double pole, 240 Volts, RCCB in the existing MCB DB complete with connections, testing and commissioning etc. as required 40 Amps	Each	4		
31	RCCB 4 pole in 40amp	Each	4		
32	Supplying and Fixing following rating, double pole, 415 Volts, RCCB in the existing MCB DB complete with connections, testing and commissioning etc. as required 63 Amps	Each	4		
33	RCCB 4 pole in 63amp	Each	4		
34	Supplying and Fixing 5 amps to 32 amps rating 240 Volts, C series, Miniature Circuit Breaker suitable for inductive loads of following poles in the existing MCB DB complete with connections, testing and commissioning etc as required a) Single Pole	Each	120		
35	Supply and Fixing of single pole blanking plate in the existing MCB DB complete etc as required	Each	20		
36	Supply and installation for electrical panel with 1no of CT Meter, 2 no of 63 Amp 10 KA MCCB, 2 no of 100 AMP 16 KA MCCB, 200A buzz bar, Volt & Amp meter and required thimbles, Indicator Lights and other accessories including incoming 200 AMP 4 core 4 pole MCCB 25 KA	Set	1		
37	Supplying of following sixes of XLPE insulated Aluminum conductor Armoured cable , 1.1 KV grade cables conforming to relevent IS code				

	and TECHNICAL specifications.				
	a) 2x10 sqm mm XLPE insulated AI conductor armoured cable	Meter	25		
	b) 3.5x50 sq mm XLPE insulated AI, conductor armoured cable	Meter	30		
	c) 3.5 X 95 sqmm. XLPE insulated AI. Conductor armoured cable	Meter	25		
	d) 4X25 sqmm. XLPE insulated AI. Conductor armoured cable	Meter	30		
38	Supplying of following sixes of XLPE insulated Copper conductor Armoured cable , 1.1 KV grade cables conforming to relevent IS code and TECHNICAL specifications.				
	a) 4x10 sqm mm XLPE insulated CU conductor armoured cable	Meter	78		
	b) 4X16 sqmm. XLPE insulated CU. Conductor armoured cable	Meter	35		
39	Laying of one number PVC insulated and PVC sheathed/ XLPE power cable of 1.1 KV grade of followint sixe in the existing RCC/ HUME/ METEL pipe as required..				
	a) upto 35 sqmm.	Meter	25		
	b) Above 35 sq mm and upto 95 mm	Meter	10		
40	Laying of one number PVC insulated and PVC sheathed/ XLPE power cable of 1.1 KV grade of following size on wall surface as required.				
	a) upto 35 sqmm.	Meter	40		
	b) Above 35 Sqmm and upto 95 sq.mm	Meter	38		
41	Supplying and making indoor end terminaion with brass compression gland and aluminium lugs for following size of PVC insulated and PVC sheathed/ KLPE aluminium conductor cable of 1.1KV grade asn required.				
	a) 2x10sq.mm	set	15		
	b) 3.5x50 sq mm	set	4		
	c) 3.5 X 95 sqmm. XLPE insulated AI. Conductor armoured cable	Set	4		
	d) 4 x 10 sq.mm	Set	10		
	e) 4 x 16 sq.mm	set	6		
	b) 4X 25 sqmm.	Set	0		
42	Providing and Fixing 6 SWG dia G.I. wire on surface or in recess for loop earthing along with eisting surface/ recessed conduit/submain/cable as required.	Meter	100		
43	Providing and Fixing 8 SWG dia Copper wire on surface or in recess for loop earthing along with existing surface/recessed conduit/submain/cable as required.	Meter	100		

44	Earthing with G.I. Earth plate 600mmx600mmx6mm thick including accessories and providing masonry enclosure with cover plate having locking arrangement and watering pipe of 2.7 metre long etc with charcoal/coke and salt as required.	Sets	3		
45	Providing and Fixing 25mm x 5mm G.I. strip in 40mm dia G.I. pipe from earth electrode including connection with G.I. nut, bolt, spring, washer excavation and re-filling etc as required	Meter	75		
46	Providing and Fixing 25mmx5mm G.I. strip on surface or in recess for connections etc as required	Meter	50		
47	a) 1 or 2 Module (75mm x 75mm)	Each	40		
	b) 4 Module (125mm x 75mm)	Each	25		
	c) 8 Module (125mm x 125mm)	Each	32		
48	Supplying and Fixing following modular switch/socket on the existing modular plate and switch box including connections but excluding modular plate etc as required				
49	a) 5/6 A Switch	Each	50		
	b) 15/16 A Switch	Each	25		
	c) 3 pin 5/6 A socket outlet	Each	25		
	d) 6 pin 15/16 A Socket Outlet	Each	25		
	e) Telephone Socket Outlet	Each	60		
	f) usb outlet /port	Each	60		
50	Supply and Fixing Testing and Commissioning of Modular RJ-45 with data outlet socket with grid and cover plate in suitable size of 16 SWG GI Box	Each	15		
51	Supplying and Drawing of UTP 4 pair CAT 6 LAN Cable in the existing surface/recessed Steel/PVC conduit as required. - 1 RUN	Meter	1200		
52	Supply and installation of 16 Port DVR with 2TB Harddisk for Camera Management	No.s	1.00		
53	Supply and installation of wiring for required CCTV cameras	RMT	350.00		
54	Supply and fixing of compact type mirror light fitting suitable for energy efficient 12 W led lamp along with all accessories i/c S/F 1 no 7 watt led lamp directly on wall connection etc as reqd	each	8		
55	SITC of designer hanging lights above conference table in the main conference room/ hall of maximum size up to 750mmx 200mmx200mm fabricated out of fabric or glass on MS powder coated round or square bar frame fitted with CFL or LED bulbs as per	each	7		

	design.				
56	SITC of profile LED light fitting in 24mm x 26mm aluminium channels fitted with LED bulbs upto 100pc in each running meter length with SMPS of up to 120 watts max as required in wooden or pop false ceiling.	mtr	12		
57	SITC 4 x 10sqmm + 1 x 6sqmm FRLS copper cable in PVC conduit including termination	RMT	250.00		
58	Supplying and fixing of following ways surface / races mounting 12 way (4+12), Double door	No.s	4		
59	Providing and fixing 25L Gyeser for Toilet & Pantry	No.s	4		
60	Providing & Fixing 6W Lights	No.s	10		
61	Providing & Fixing LED Strip Lights in Coves.	Rmt	250		
62	SITC profile lights of size 50mm x 75mm in class room corridor	No.s	20		
63	Providing and installing weatherproof electrical box on terrace for AC units	No.s	10		
64	Providing & Installing buzz bars	No.s	2		
	Sub Total (H)				
	Total Amount				
	Add : Applicable GST @9%SGST				
	Add : Applicable GST @9%CGST				
	Grand Total Amount				

SIGNATURE OF BIDDER WITH SEAL AND DATE

Performance Security

FORM OF BANK GUARANTEE FOR PERFORMANCE SECURITY

(To be stamped in accordance with Stamps Act of India)

1. THIS DEED of Guarantee made this day of _____ between _____ (Name of the Bank) (here in after called the "Bank") of the one part and _____ (Name of the Department) (hereinafter called the "Department") of the other part.
2. WHEREAS _____ (Name of the Department) has awarded the contract for creation of furnished office accommodation, renovation/repairs and other miscellaneous work job of contract for Rs. _____ (Rupees in figures and words) (hereinafter called the "contract") to M/s _____ (Name of the contractor (hereinafter called the "contractor")).
3. AND WHEREAS THE Contractor is bound by the said Contract to submit to the Department a Performance Security for a total amount of Rs. _____ (Amount in figures and words).
4. NOW WE the Undersigned _____ (Name of the Bank) being fully authorized to sign and to incur obligations for and on behalf of and in the name of _____ (Full name of Bank), hereby declare that the said Bank will guarantee the Department the full amount of Rs. _____ (Amount in figures and words) as stated above.
5. After the Contractor has signed the aforementioned contract with the Department, the Bank is engaged to pay the Department, any amount up to and inclusive of the aforementioned full amount upon written order form the Department to indemnify the Department for any liability of damage resulting from any defects of shortcomings of the Contractor or the debts he may have incurred to any parties involved in the Works under the Contract mentioned above, whether these defects or shortcomings or debts are actual or estimated or expected. The bank will deliver the money required by the Department immediately on demand without delay without reference to the Contractor and without the necessity of a previous notice of or judicial or administrative procedures and without it being necessary to prove to the Bank the liability of damages resulting from any defects of shortcomings or debts of the Contractor. The bank shall pay to the Department any money so demanded notwithstanding any dispute /disputes raised by the Contractor in any suit of proceedings pending before any Court, Tribunal or Arbitrator(s) relating thereto and the liability under this guarantee shall be absolute and unequivocal.
6. THIS GUARANTEE is valid for a period of _____ months from the date of signing. (The initial period for which this Guarantee will be valid must be for at least six months longer than the anticipated expiry date of the Contract period).

7. At any time during the period in which this Guarantee is still valid, if the Department agree to grant a time of extension to the contractor or if the contractor fails to complete the works within the time of completion as stated in the contract, or fails to discharge himself of the liability or damage or debts as stated under para-5 above, it is understood that the Bank will extend this Guarantee under the same conditions for the required time on demand by the Department and at the cost of the contractor.
8. The Guarantee hereinbefore contained shall not be affected by any change in the Constitution of the Bank of the contractor.
9. The Neglect of forbearance of the Department in enforcement of payment of any moneys, the payment where of is intended to be hereby secured or the given of time by the Department for the payment hereof shall in no way relieve the Bank of their liability under this deed.
10. The expressions "the Department", "the Bank" and "the Contractor" herein before used shall include their respective successor and assigns.

IN WITNESS whereof I/We of; the bank has signed and sealed this guarantee on the _____ day of _____ (Month) _____ (Year) being herewith duly authorized.

For and on behalf of the _____ Bank.

Signature of authorized Bank official

Name _____

Designation _____

I.D. No. _____

Stamp/ Seal of the Bank.

Signed, sealed and delivered for and on behalf of the Bank by the above named _____ in the presence of :

Witness- 1

Signature _____

Name _____

Address _____

Witness- 2

Signature _____

Name _____

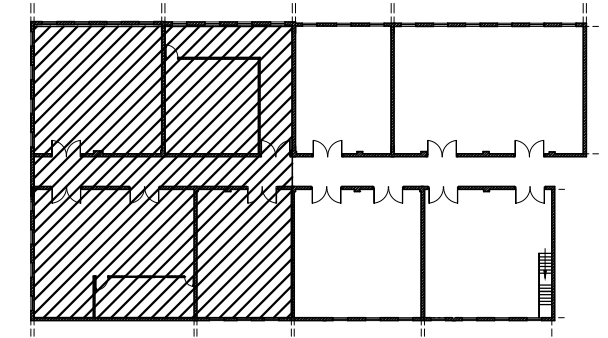
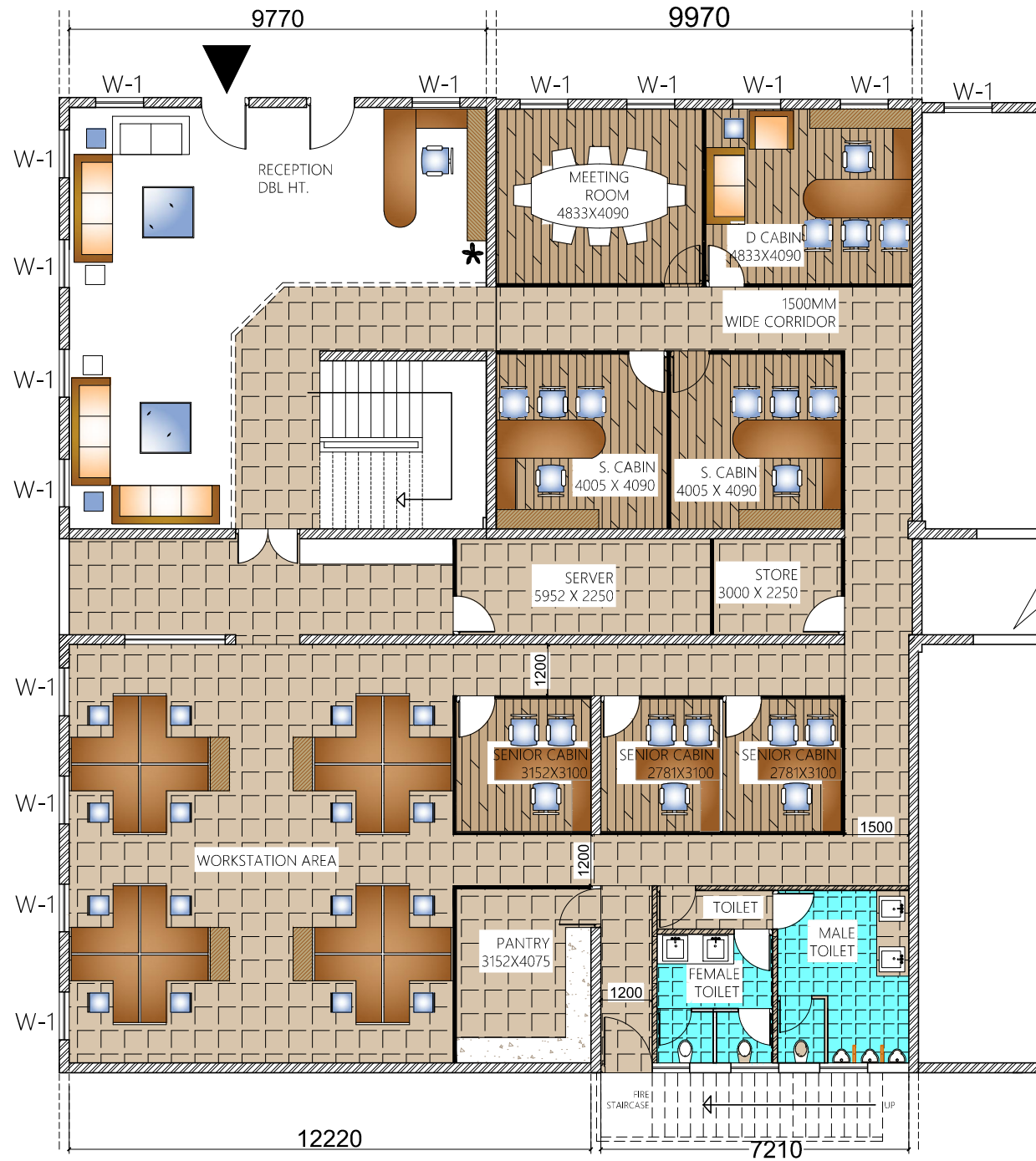
Address _____

CHECKLIST - FOR BIDDERS

S No.	Details	Yes / No	Remarks
1.	DD/PO for Rs. 18,00,000/- (Rupees Eighteen Lakhs only) in favour of Sr. Accounts Officer, FSSAI towards EMD.		
2.	Tender Form : Annexure - 1		
3.	Tender document duly signed and stamped on each page.		
4.	Bidder Profile - : Annexure - 2		
5.	Financial Status : Annexure - 3		
6.	Letter of Authority :Annexure - 4		
7.	Price-Bid : Annexure - 5		
8.	Power of attorney in favour of Signatory		
9.	Enclosed Xerox copy of PAN Card		
10.	Enclosed Xerox copy GST Registration Certificate		
11.	Enclosed Xerox copy of ESI/PF Registration Certificate		
12.	Attached the copies of the audited balance sheets, including all related notes and income statement for the last three Financial years in support of Annual Financial Turnover and strength i.e. 2016-17, 2017-18 and 2018-19.		
13.	Enclosed copy of work orders of contracts obtained as mentioned in RFP in support of experience and similar work done		
14.	Enclosed copies of Execution certificates issued by user Govt. Organisations.		

Note: Please note that in case if any of the documents mentioned in above is/are not enclosed, bid will be rejected summarily. The above check list is broadly indicative of submission of documents. **Also please go through Part-II para 3 of tender document for eligibility conditions/criteria so as to avoid any scope of non fulfilling of qualifying condition.**

SIGNATURE OF BIDDER WITH SEAL AND DATE



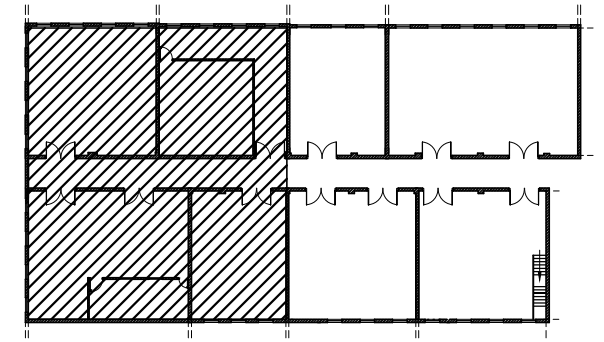
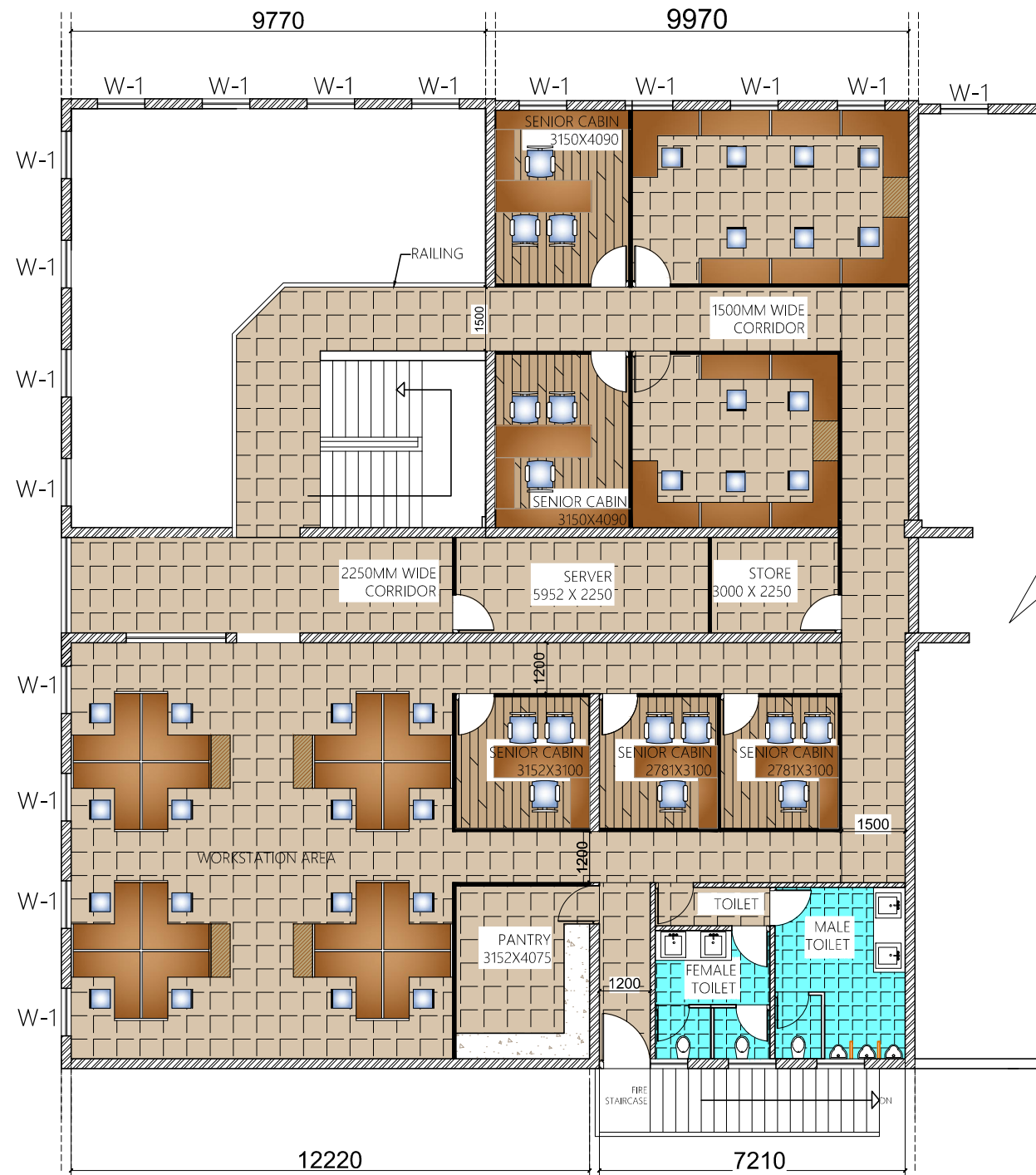
KEY PLAN

 PROPOSED AREA FOR REGIONAL OFFICE

LEGEND

- GROUND FLOOR AREA- 440 SQ MTRS
- DIRECTOR CABIN-1
- SENIOR CABIN -5
- WORKSTATIONS - 16
- MEETING ROOM-1
- SERVER ROOM-1
- PANTRY-1
- STORE-1
- TOILETS

PROJECT	REGIONAL OFFICE FSSAI ,MUMBAI	CHECKED BY: RASHMI GUPTA MANISH GUPTA		CLIENT :	DES BY : PRIYA
	TITLE	PROPOSED LAYOUT GROUND FLOOR	DATE: 27-08-2019	REVISION	ANNEXE , EIA HOUSE, ANDHERI EAST MUMBAI
DWG NO. REG/05					



KEY PLAN

 PROPOSED AREA FOR REGIONAL OFFICE

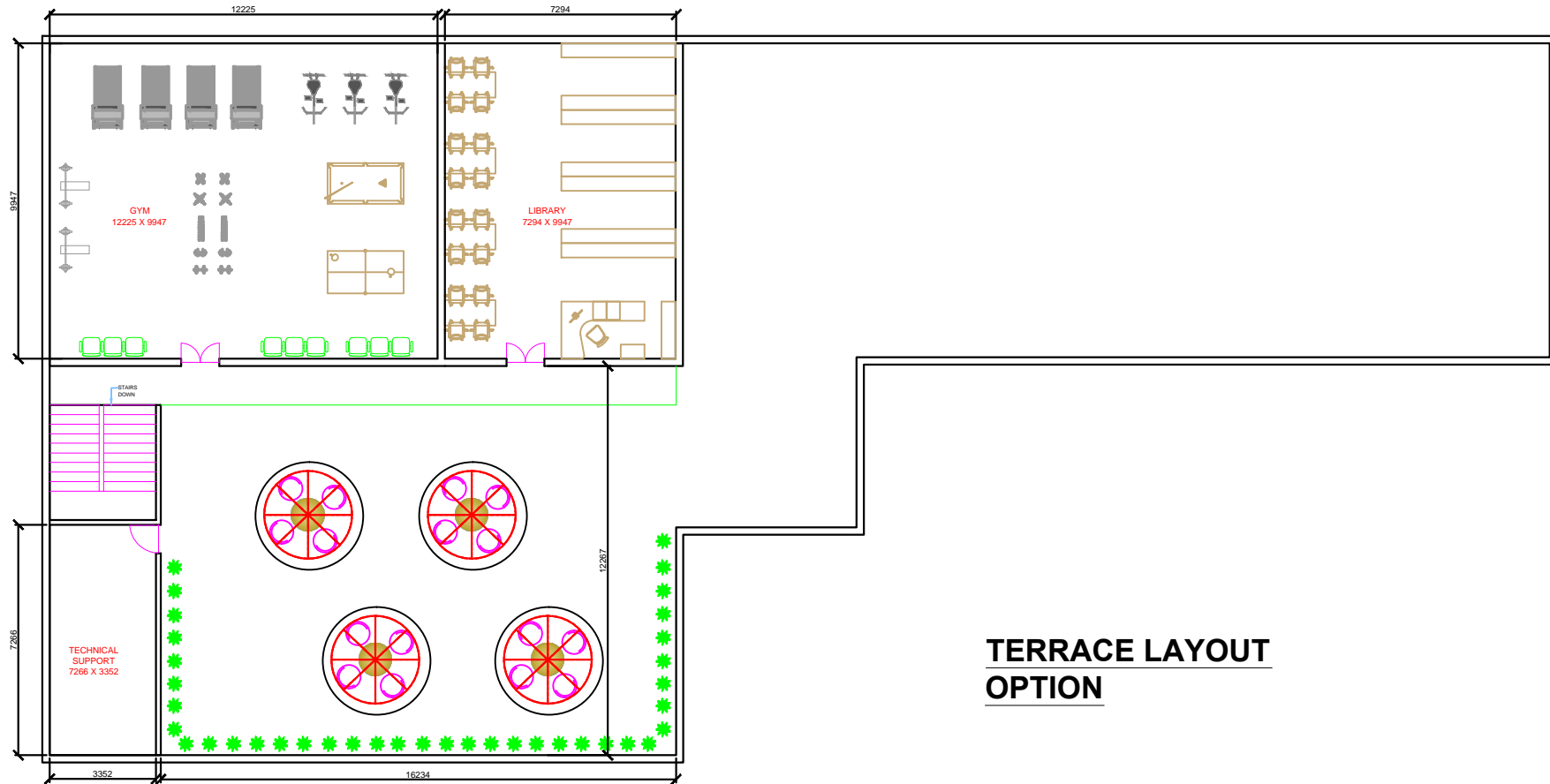
LEGEND

- MEZZANINE AREA- 380 SQ MTRS.
- SENIOR CABIN -5
- WORKSTATIONS - 28
- SERVER ROOM-1
- PANTRY-1
- STORE-1
- TOILETS

PROJECT	REGIONAL OFFICE FSSAI ,MUMBAI	CHECKED BY: RASHMI GUPTA MANISH GUPTA		CLIENT : ANNEXE , EIA HOUSE, ANDHERI EAST MUMBAI	DES BY : PRIYA
	TITLE	PROPOSED LAYOUT MEZZANINE	DATE: 27-08-2019		REVISION
			DWG NO. REG/06		

PRODUCED BY AN AUTODESK EDUCATIONAL PRODUCT

PRODUCED BY AN AUTODESK EDUCATIONAL PRODUCT



**TERRACE LAYOUT
OPTION**

PROJECT	REGIONAL OFFICE FSSAI ,MUMBAI	CHECKED BY: RASHMI GUPTA MANISH GUPTA		CLIENT :	DES BY : SHAGUN
	TITLE	PROPOSED LAYOUT	DATE: 08-07-2019	REVISION	FOOD SAFETY & STANDARD AUTHORITY OF INDIA
		DWG NO. REG/04			